



Comune di Montecorvino Pugliano

PIANO URBANISTICO ATTUATIVO PIANO DI RECUPERO - SOTTOZONA B3

ELABORATI

Planimetria generale

Rapp.1:1000

Sagome e tabelle metriche dei fabbricati

Rapp.1:200

Tipologie edilizie

Rapp.1:200

B₁₀

Note:

Committente:

Consorzio Parco Verdiana

Progettista:



OFFICINA PROGETTI s.r.l.
Viale Wagner, 28
84131 - SALERNO
tel. 089 759731 - fax 089 3115040
Resp. Progettazione Ing. Paolo SERGIO
email: psergio@officina-progetti.com





Data:

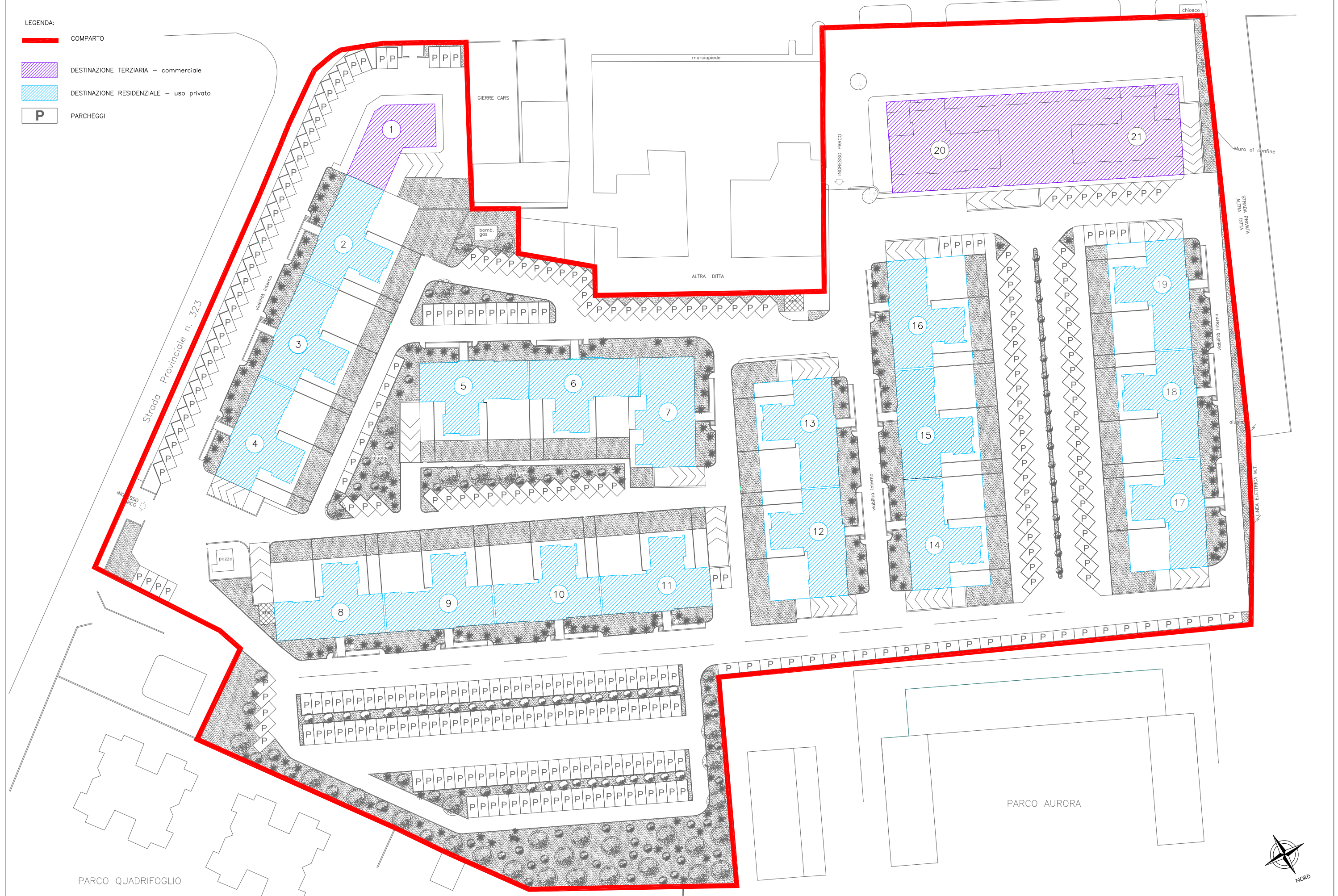
Agg.

Planimetria generale Piano Terra

Strada Statale n. 18 (Tirrena Inferiore)

LEGENDA:

-  COMPARTO
-  DESTINAZIONE TERZIARIA - commerciale
-  DESTINAZIONE RESIDENZIALE - uso privato
-  PARCHEGGI



PARCO QUADRIFOGLIO




PARCO AURORA

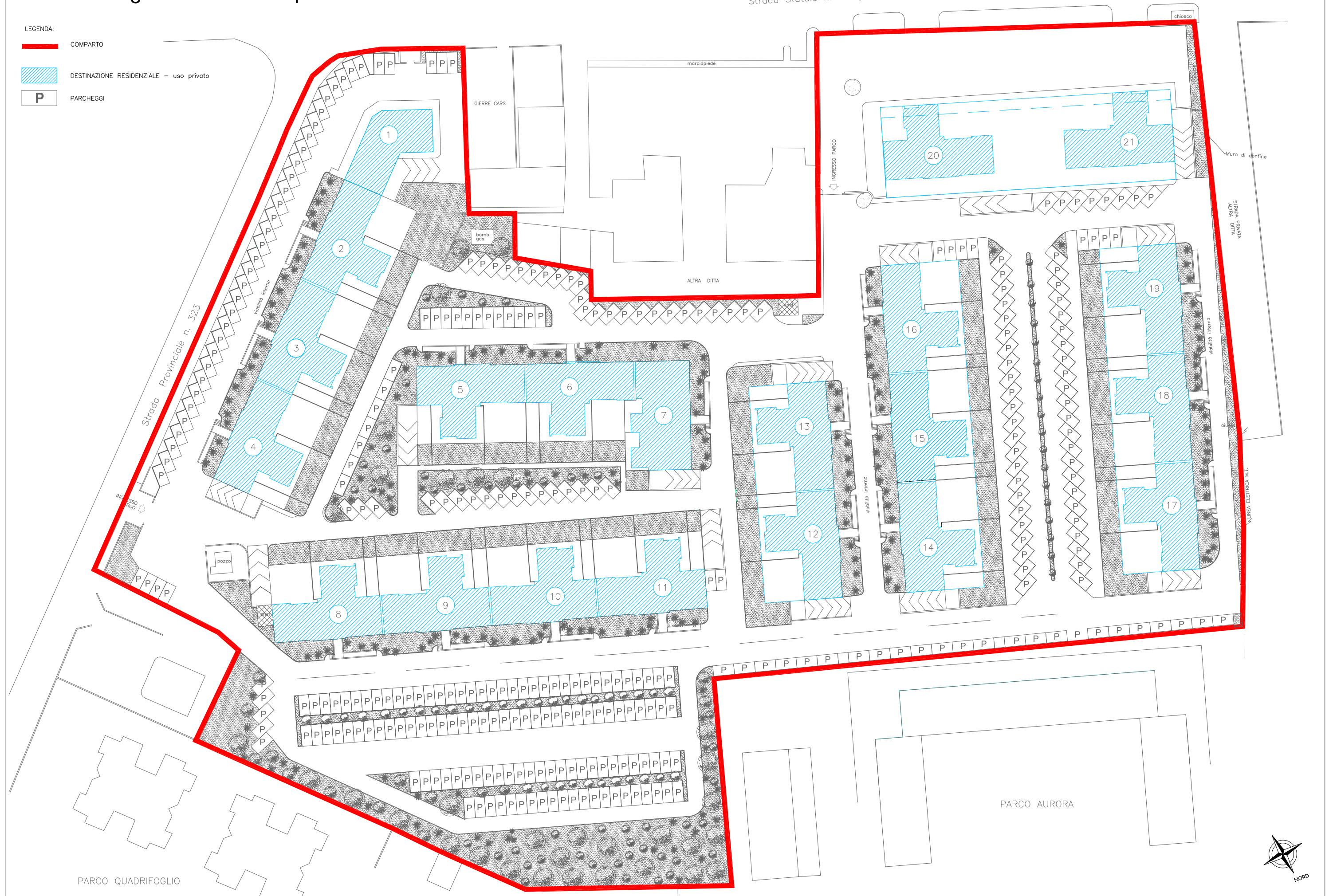


Planimetria generale Piano Tipo

Strada Statale n. 18 (Tirrena Inferiore)

LEGENDA:

-  COMPARTO
-  DESTINAZIONE RESIDENZIALE - uso privato
-  PARCHEGGI



PARCO QUADRIFOGLIO

PARCO AURORA



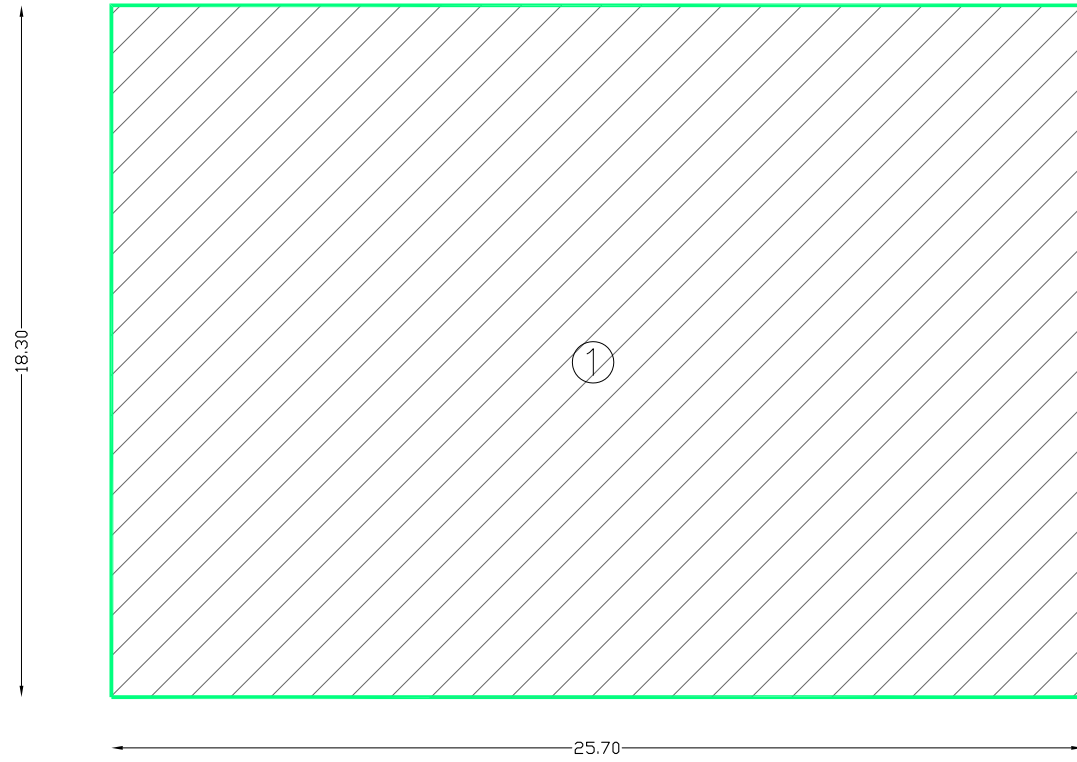
TABELLA METRICA DEI FABBRICATI

	SUPERFICIE COPERTA [mq]	SUPERFICIE PER VOLUME URBANISTICO [mq]	ALTEZZA [m]	EDIFICI SMILARI	VOLUME URBANISTICO SINGOLA TIPOLOGIA [mc]	VOLUME URBANISTICO COMPLESSIVO [mc]	SUPERFICIE COPERTA COMPLESSIVA [mq]
Edificio tipo (2-3-4-5-6-8-9-10-11-12-13-14-15-16-17-18-19)							
Seminterrato		470,31	0,71	17,00	333,92	5676,64	
Rialzato		310,30	3,00	17,00	930,90	15825,30	
Primo		310,30	3,00	17,00	930,90	15825,30	
Secondo		310,30	3,00	17,00	930,90	15825,30	
Terzo		310,30	3,00	17,00	930,90	15825,30	
Sub Totale edificio	310,30				4058	68978	5275
Edificio 1							
Terraneo		247,40	4,00	1,00	989,60	989,60	
Primo		247,40	3,00	1,00	742,20	742,20	
Secondo		247,40	3,00	1,00	742,20	742,20	
Terzo		247,40	3,00	1,00	742,20	742,20	
Sub Totale edificio	247,40				3216	3216	247
Edificio 7							
Seminterrato		403,00	0,69	1,00	278,07	278,07	
Rialzato		340,20	3,00	1,00	1020,60	1020,60	
Primo		340,20	3,00	1,00	1020,60	1020,60	
Secondo		340,20	3,00	1,00	1020,60	1020,60	
Terzo		340,20	3,00	1,00	1020,60	1020,60	
Sub Totale edificio	340,20				4360	4360	340
Edificio 20 - 21							
Terraneo		1286,00	3,70	1,00	4758,20	4758,20	
Primo		310,30	3,00	2,00	930,90	1861,80	
Secondo		310,30	3,00	2,00	930,90	1861,80	
Terzo		310,30	3,00	2,00	930,90	1861,80	
Sub Totale edificio	1495,76				7551	10344	1496
Totale						86898	7358

LEGENDA IMMOBILI

- | | | |
|------------------------|-------------------------|------------------------|
| 1 = Palazzo Z | 8 = Palazzo B2 scala D | 14 = Palazzo C scala C |
| 2 = Palazzo C2 scala C | 9 = Palazzo B2 scala C | 15 = Palazzo C scala B |
| 3 = Palazzo C2 scala B | 10 = Palazzo B2 scala B | 16 = Palazzo C scala A |
| 4 = Palazzo C2 scala A | 11 = Palazzo B2 scala A | 20 = Palazzo A scala B |
| 5 = Palazzo D scala A | 12 = Palazzo A2 scala B | 21 = Palazzo A scala A |
| 6 = Palazzo D scala B | 13 = Palazzo A2 scala A | |
| 7 = Palazzo D scala C | 17 = Palazzo B scala C | |
| | 18 = Palazzo B scala B | |
| | 19 = Palazzo B scala A | |

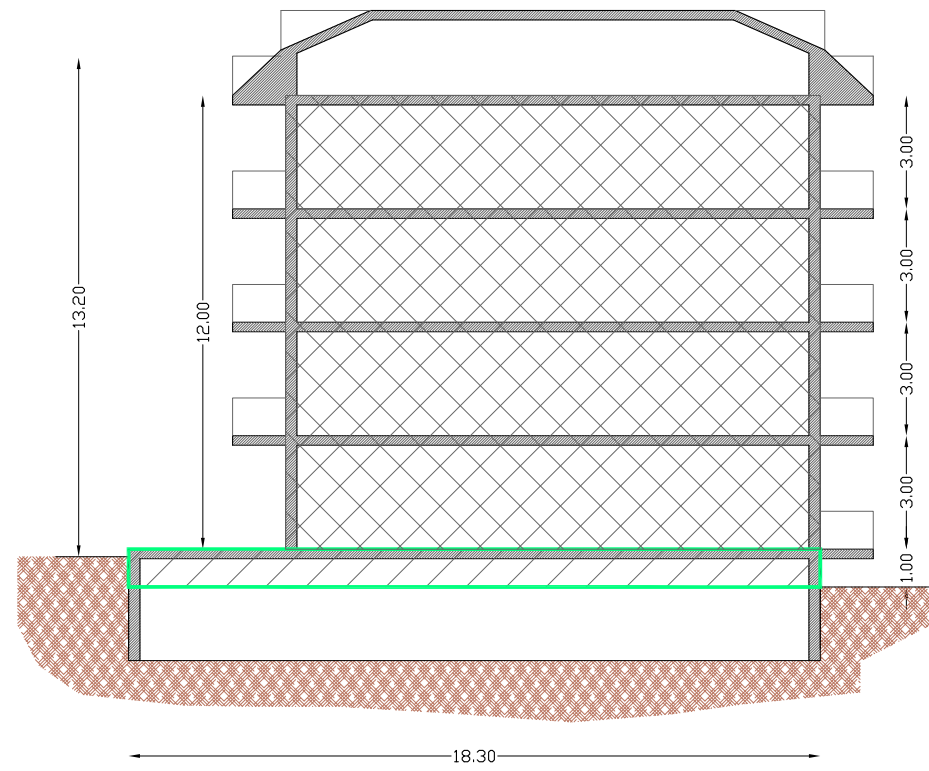
EDIFICI 2-3-4-5-6-8-9-10-11-12-13-14-15-16-17-18-19
 Superficie Coperta mq = 310.30



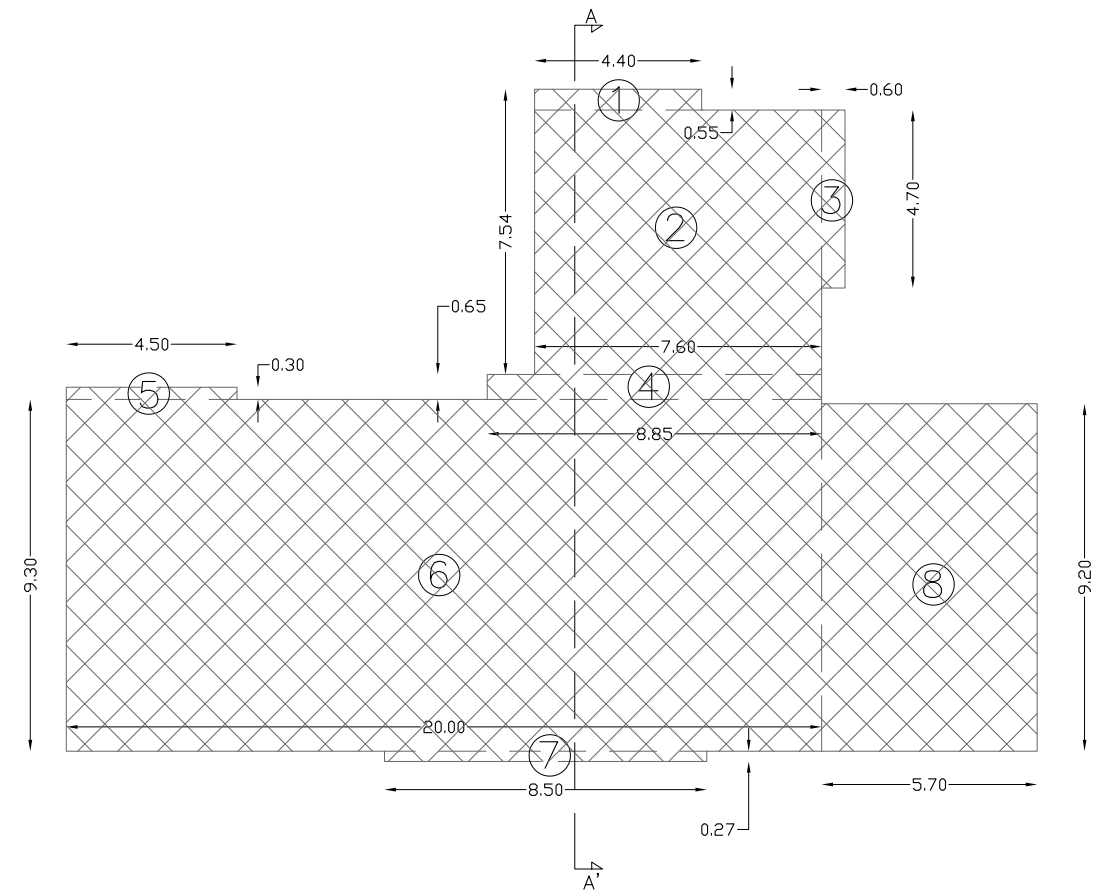
Calcolo superficie
 Area 1 = 25.70 x 11.15 = 470.31
 Area Totale mq = 470.31

Calcolo superficie
 Area 1 = 4.40 x 0.55 = 2.40 mq
 Area 2 = 7.54 x 7.60 = 57.30 mq
 Area 3 = 4.70 x 0.60 = 2.80 mq
 Area 4 = 8.85 x 0.65 = 5.75 mq
 Area 5 = 4.50 x 0.30 = 1.35 mq
 Area 6 = 9.30 x 20.00 = 186.00 mq
 Area 7 = 8.50 x 0.27 = 2.30 mq
 Area 8 = 5.70 x 9.20 = 52.40 mq

Area Totale = 310.30 mq



SEZIONE A-A'

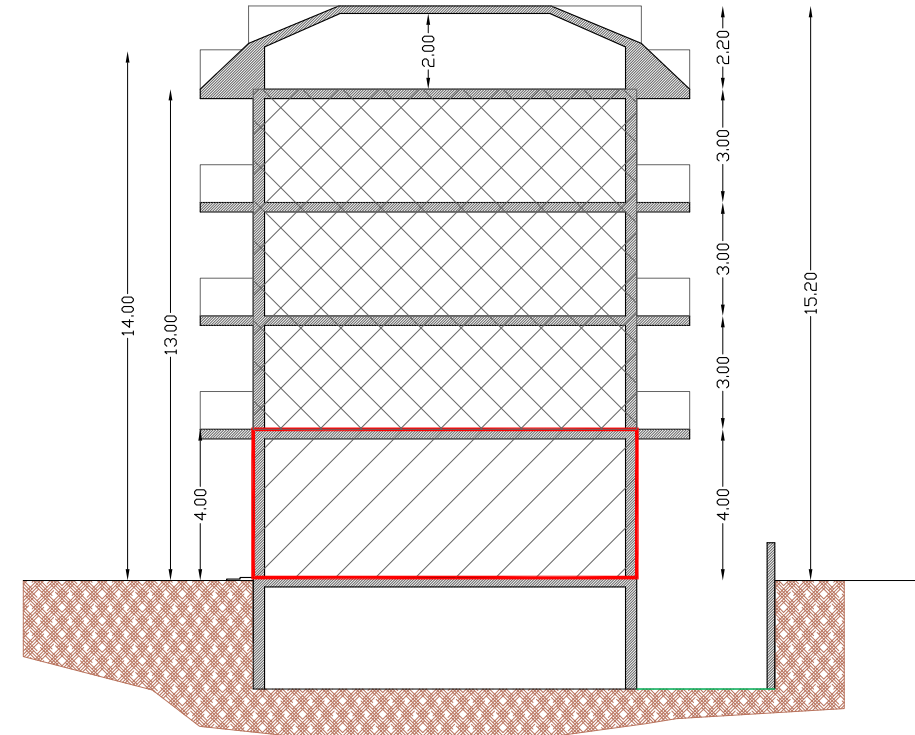


RESIDENZIALE
 SOTTERANEO

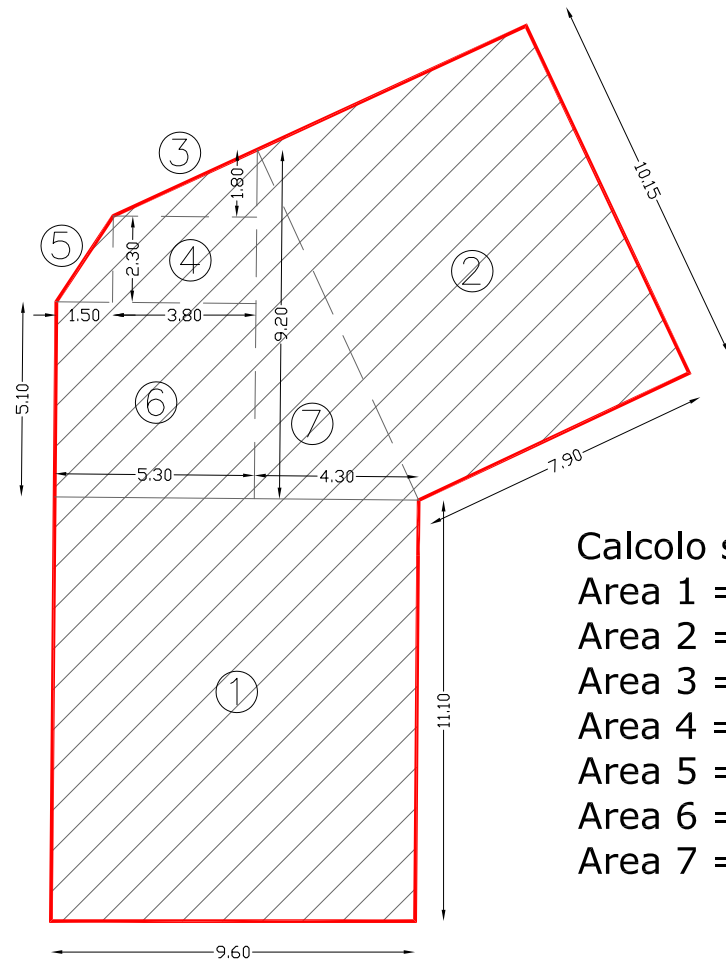
scala 1:200

EDIFICIO 1

Superficie Coperta mq = 247.40



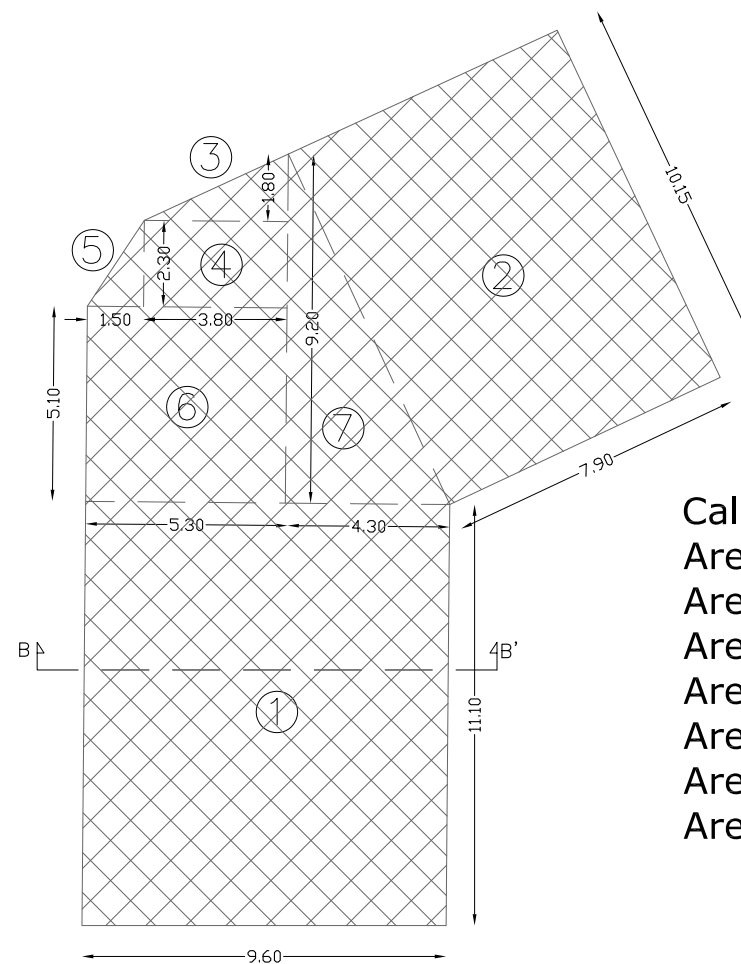
SEZIONE B-B'



Calcolo superficie

- Area 1 = $9.60 \times 11.10 = 106.55$ mq
- Area 2 = $7.90 \times 10.15 = 80.20$ mq
- Area 3 = $41.80 \times 3.80 \times 0.5 = 3.40$ mq
- Area 4 = $2.30 \times 3.80 = 8.75$ mq
- Area 5 = $1.50 \times 2.30 \times 0.5 = 1.70$ mq
- Area 6 = $5.10 \times 5.30 = 27.00$ mq
- Area 7 = $9.20 \times 4.30 \times 0.5 = 19.80$ mq

Area Totale = 247.40 mq



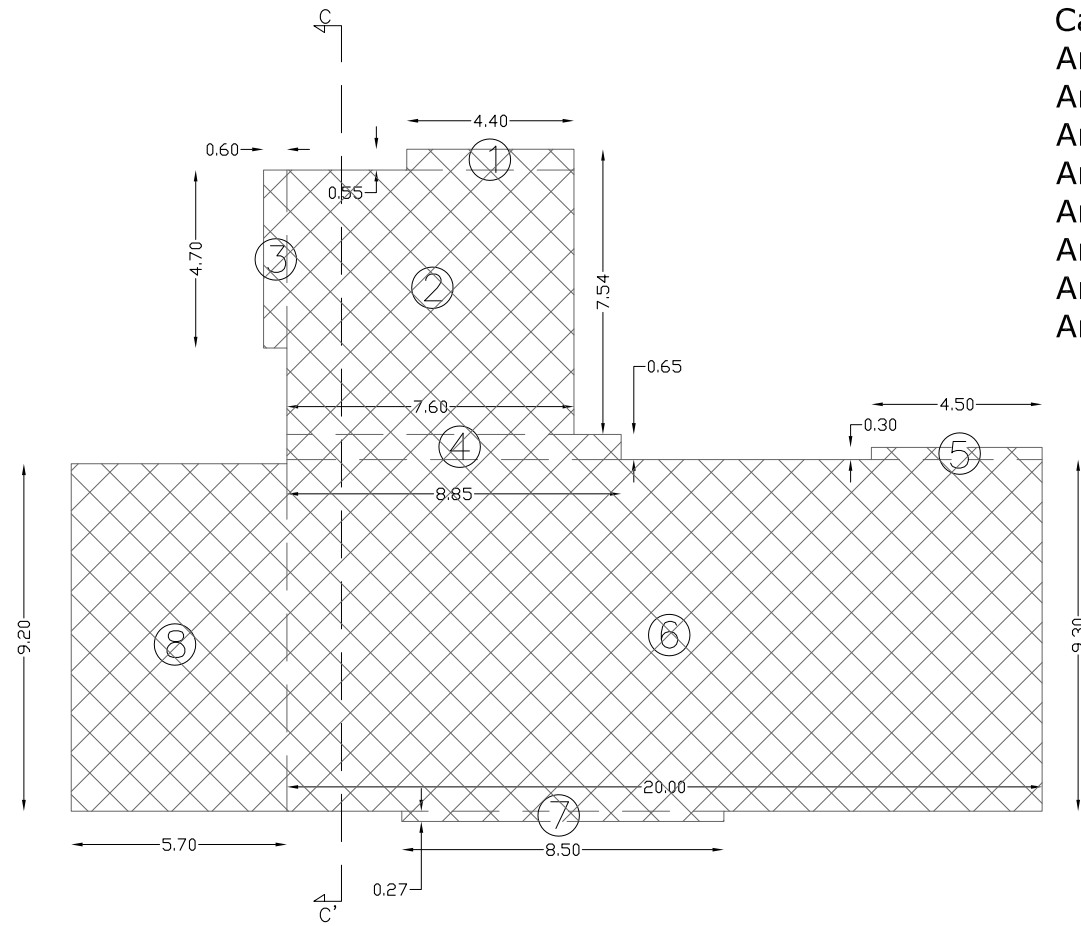
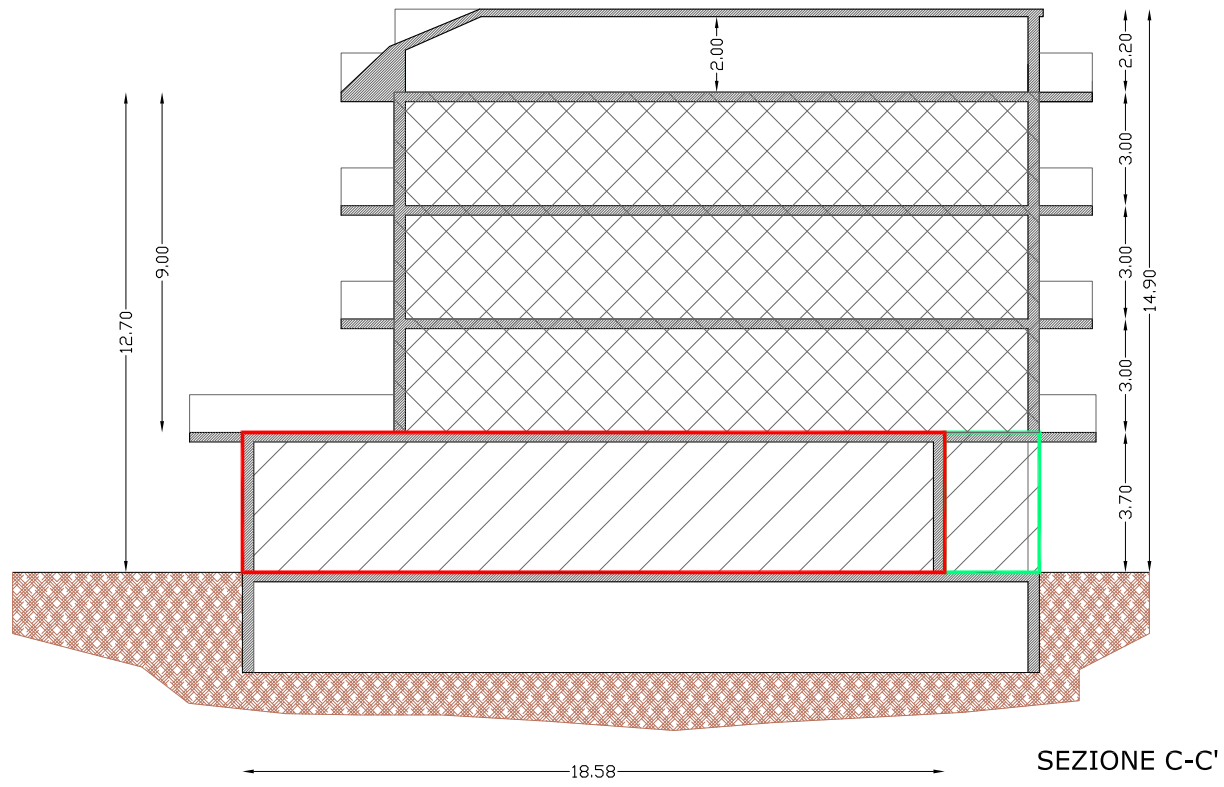
Calcolo superficie

- Area 1 = $9.60 \times 11.10 = 106.55$ mq
- Area 2 = $7.90 \times 10.15 = 80.20$ mq
- Area 3 = $41.80 \times 3.80 \times 0.5 = 3.40$ mq
- Area 4 = $2.30 \times 3.80 = 8.75$ mq
- Area 5 = $1.50 \times 2.30 \times 0.5 = 1.70$ mq
- Area 6 = $5.10 \times 5.30 = 27.00$ mq
- Area 7 = $9.20 \times 4.30 \times 0.5 = 19.80$ mq

Area Totale = 247.40 mq

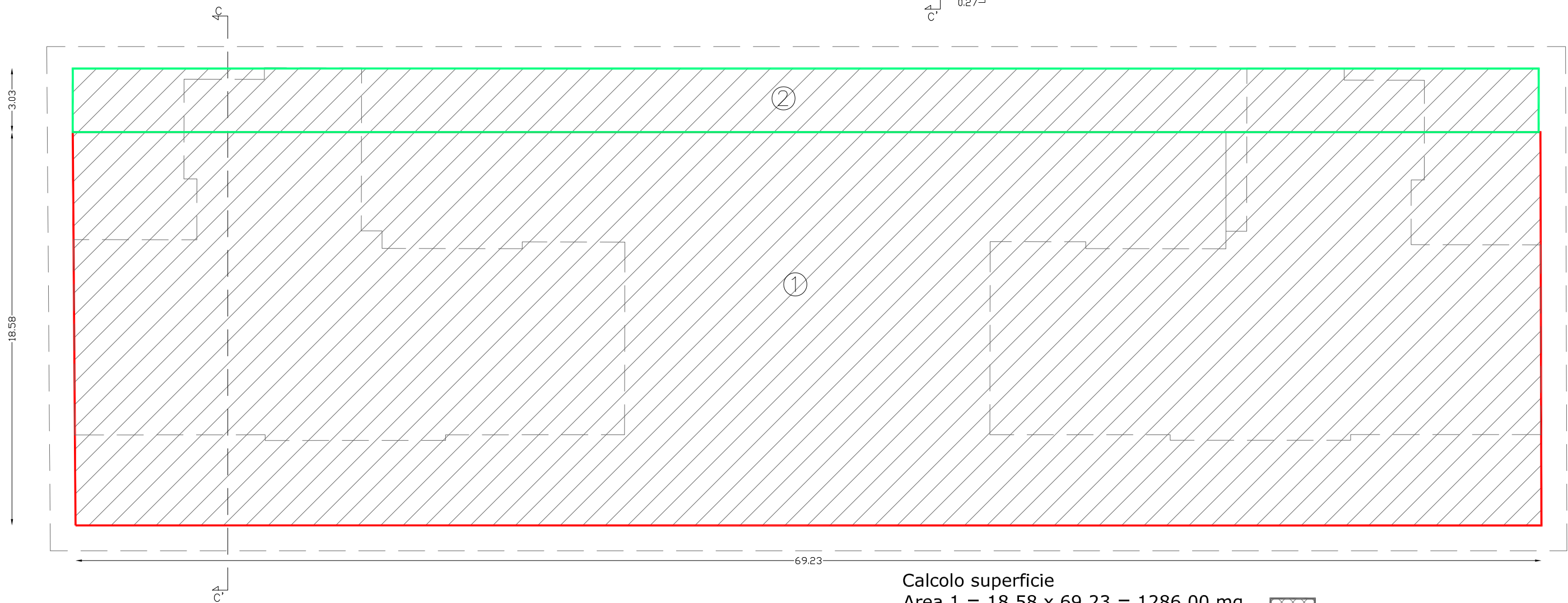
EDIFICI 20-21

Superficie Coperta mq = 1495.76



Calcolo superficie

- Area 1 = 4.40 x 0.55 = mq 2.40
- Area 2 = 7.54 x 7.60 = mq 57.30
- Area 3 = 4.70 x 0.60 = mq 2.80
- Area 4 = 8.85 x 0.65 = mq 5.75
- Area 5 = 4.50 x 0.30 = mq 1.35
- Area 6 = 9.30 x 20.00 = mq 186
- Area 7 = 8.50 x 0.27 = mq 2.30
- Area 8 = 5.70 x 9.20 = mq 52.40
- Area Totale mq = 310.30



Calcolo superficie

- Area 1 = 18.58 x 69.23 = 1286.00 mq
- Area 2 = 3.03 x 69.23 = 209.76 mq
- Area Totale = 1495.76 mq

	RESIDENZIALE		PORTICO
	COMMERCIALE		

scala 1:200

EDIFICIO 7

Superficie Coperta mq = 340.20

Calcolo superficie

Area 1 = 11.50 x 12.40 = mq 142.60

Area 2 = 1.40 x 8.80 = mq 12.30

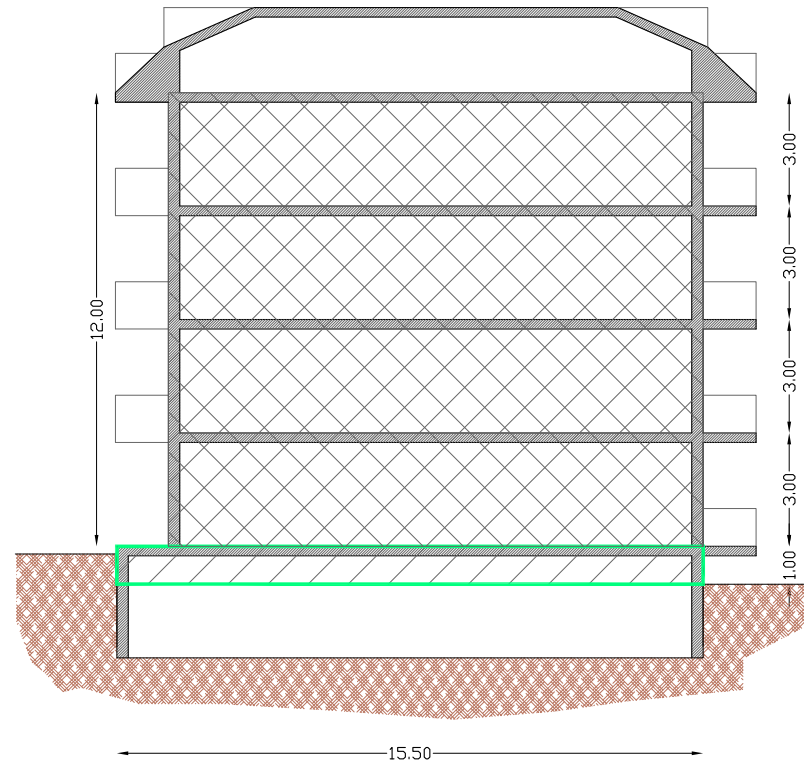
Area 3 = 14.30 x 4.50 = mq 64.30

Area 4 = 3.65 x 12.40 = mq 45.20

Area 5 = 4.80 x 14.50 = mq 69.60

Area 6 = 10.40 x 0.60 = mq 6.20

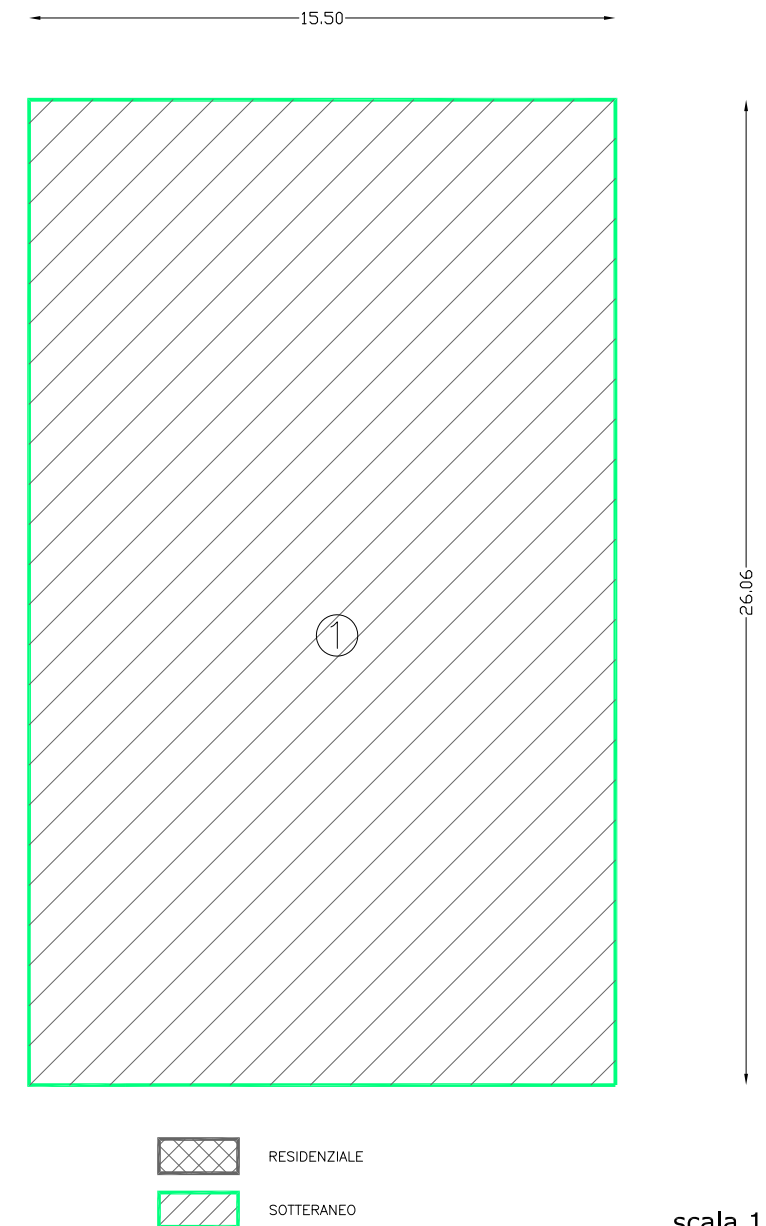
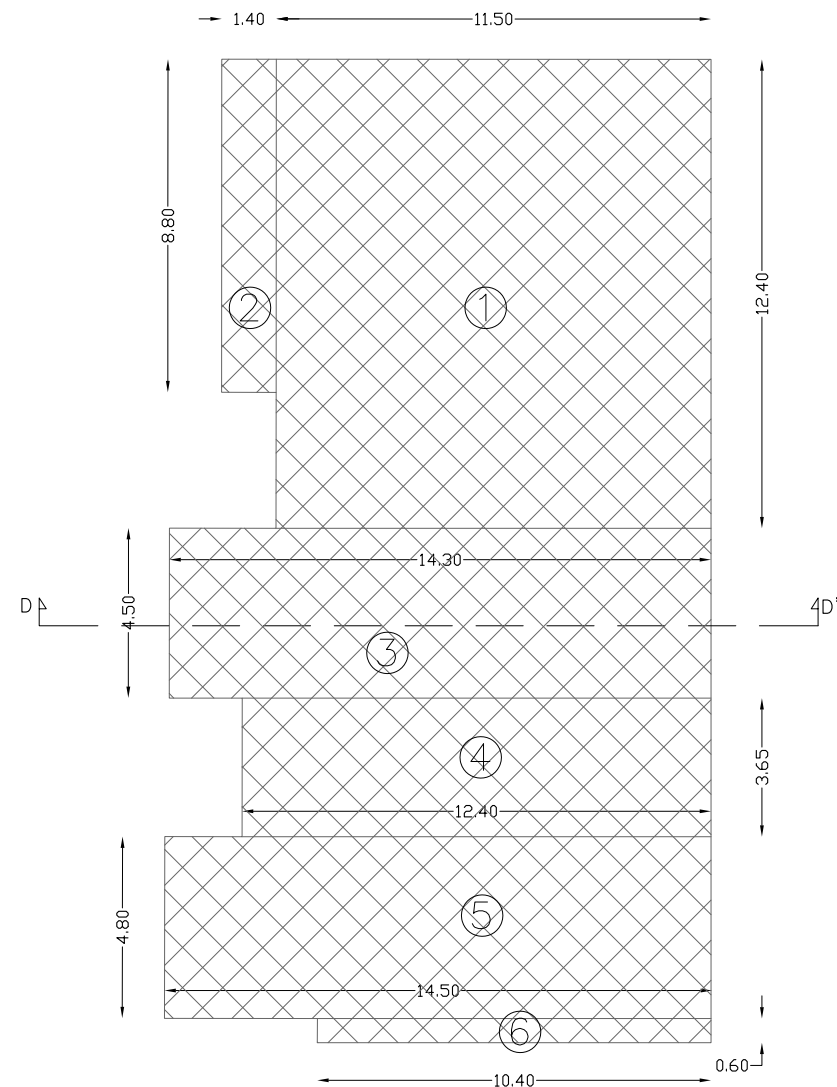
Area Totale mq = mq 340.20



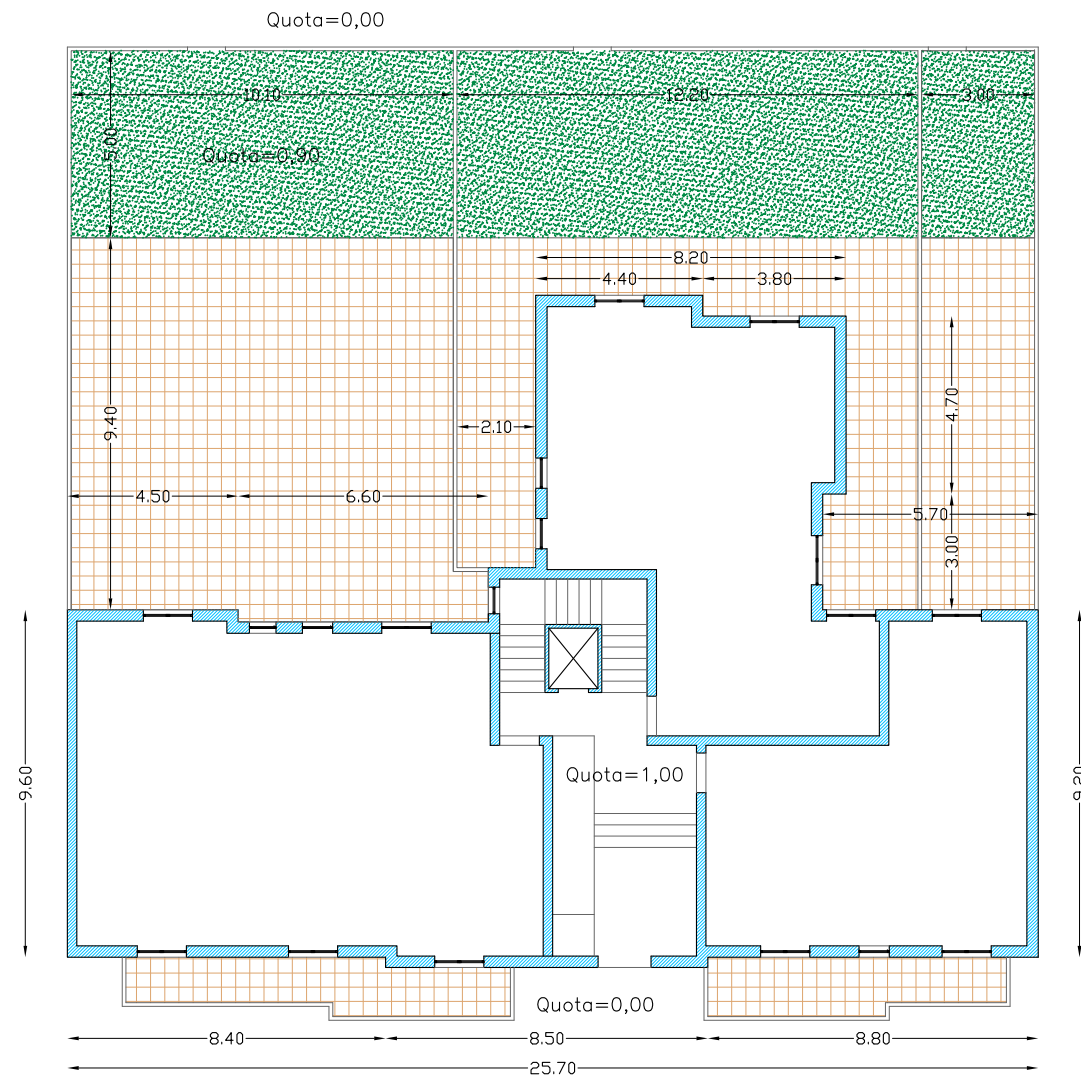
SEZIONE D-D'

Calcolo superficie

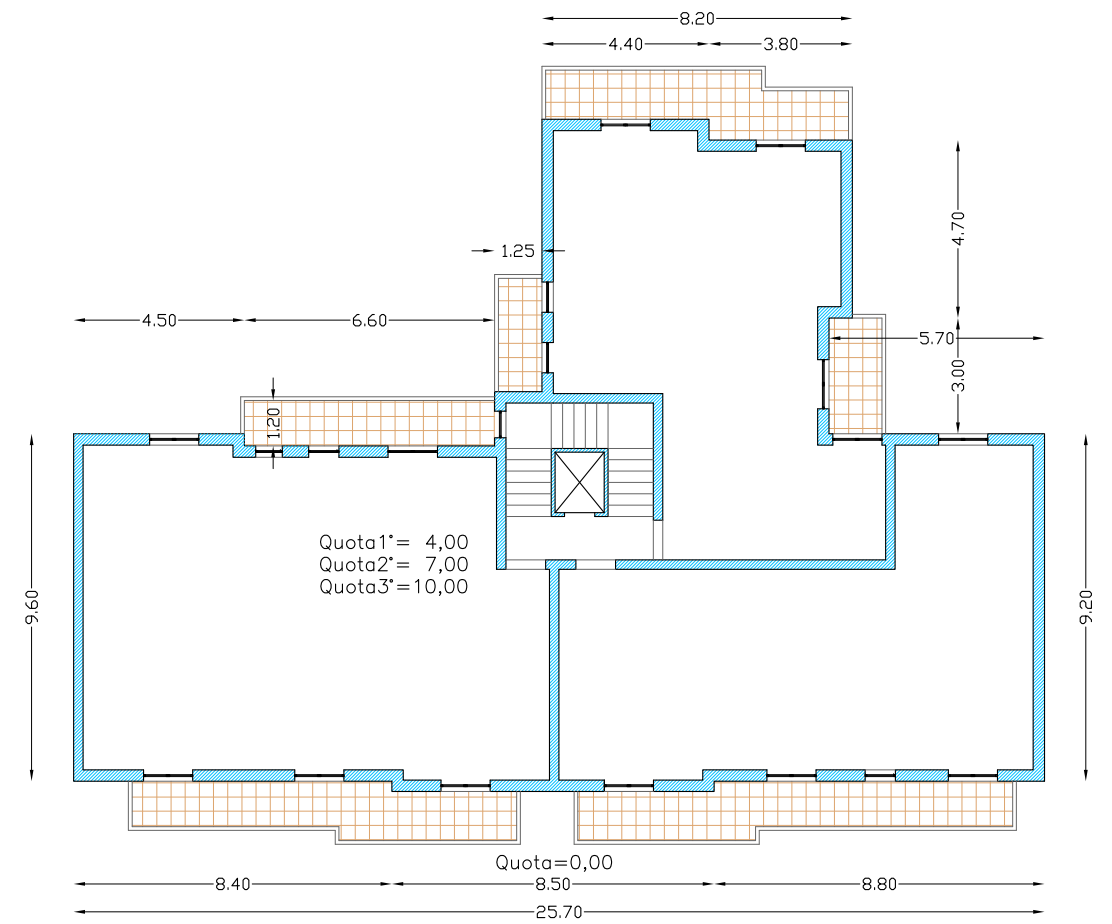
Area 1 = 15.50 x 26.00 = mq 403



EDIFICI :
 2 -3 -4 -5 -6 -8 -9 -10 -11 -12 -13 -14 -15 -16 -17 -18 -19

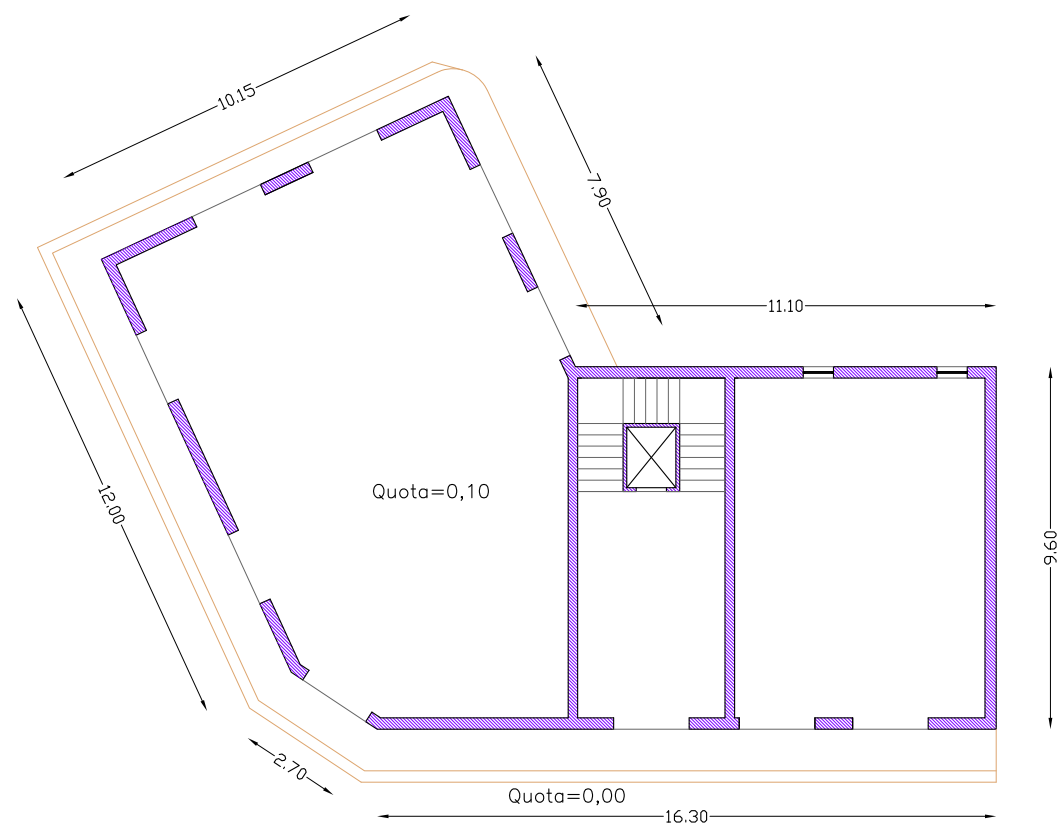


PIANTA PIANO RIALZATO

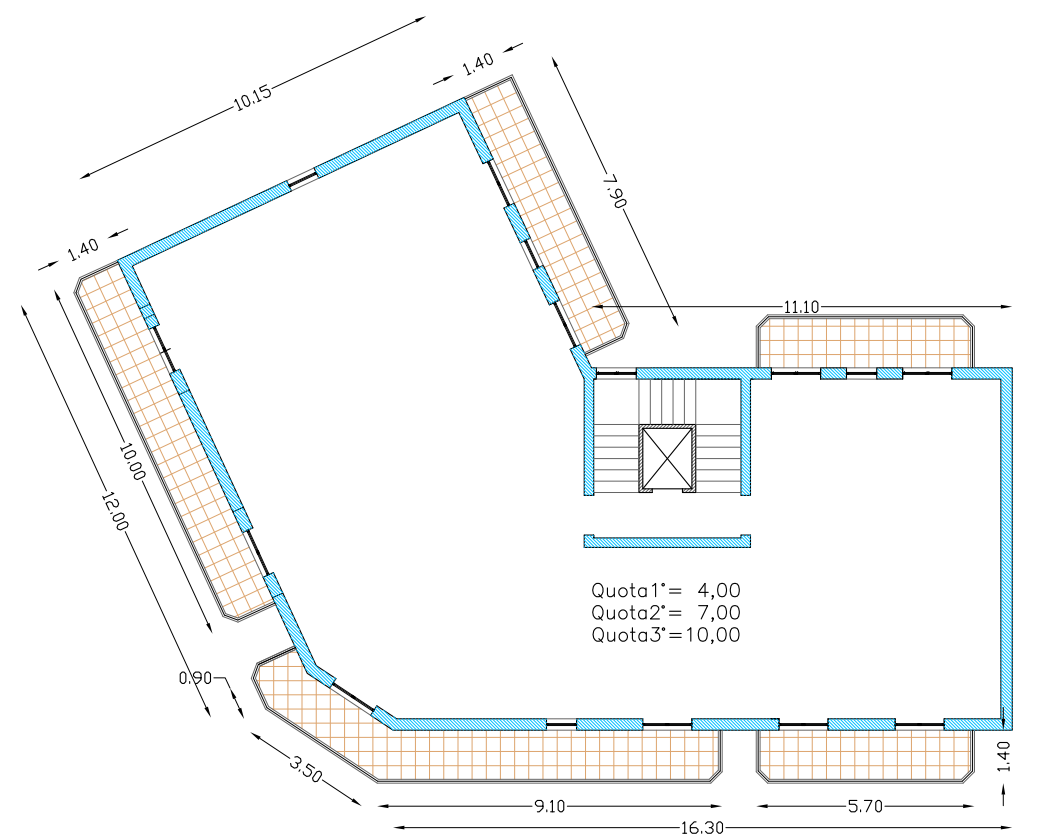


PIANTA PIANO TIPO

EDIFICIO 1



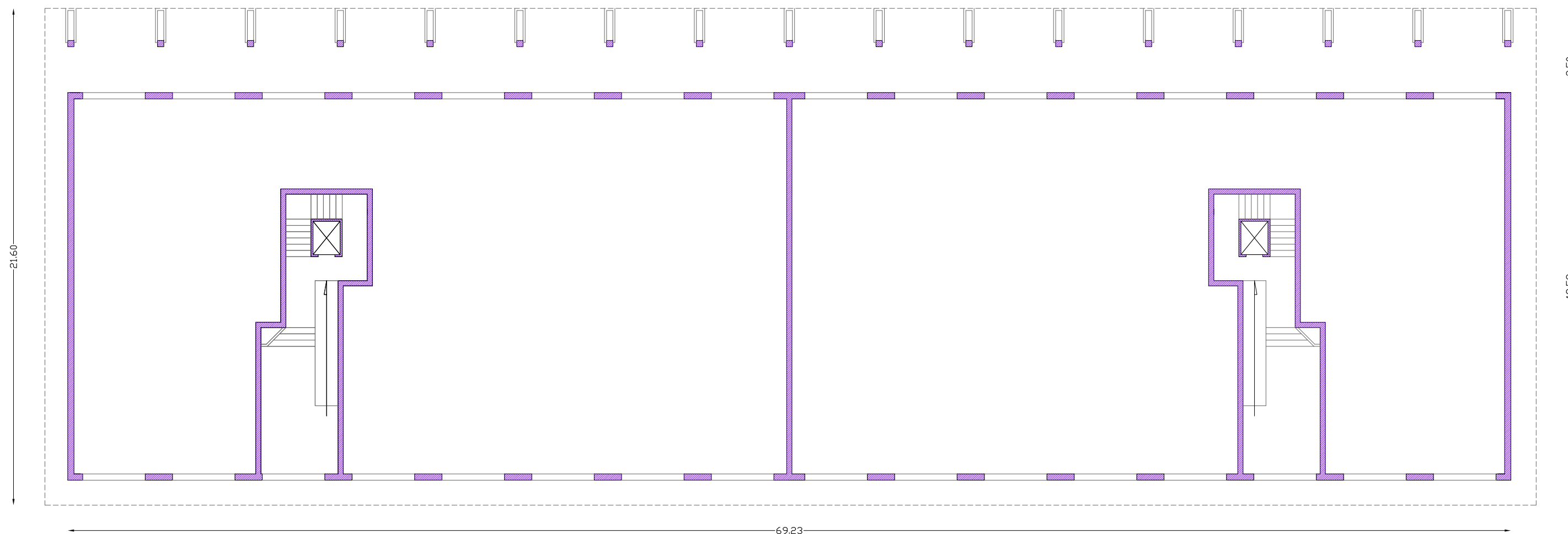
PIANTA PIANO TERRA



PIANTA PIANO TIPO

EDIFICIO :
20 - 21

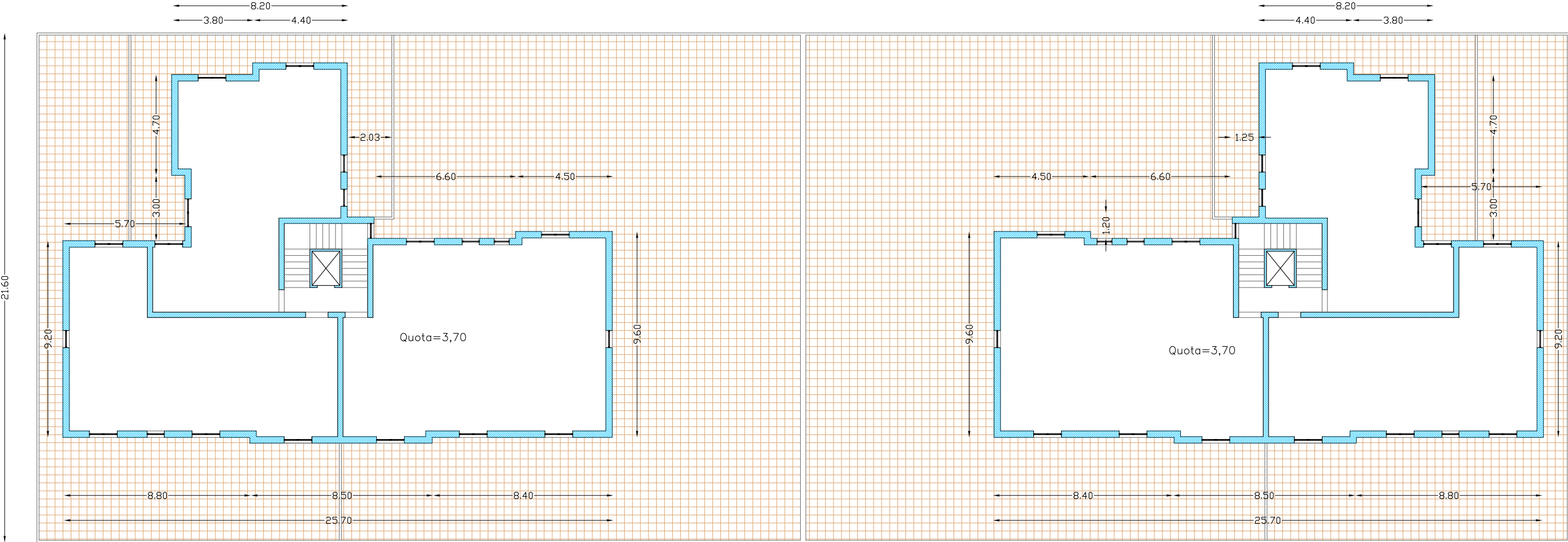
Quota=0,00



PIANTA PIANO TERRA

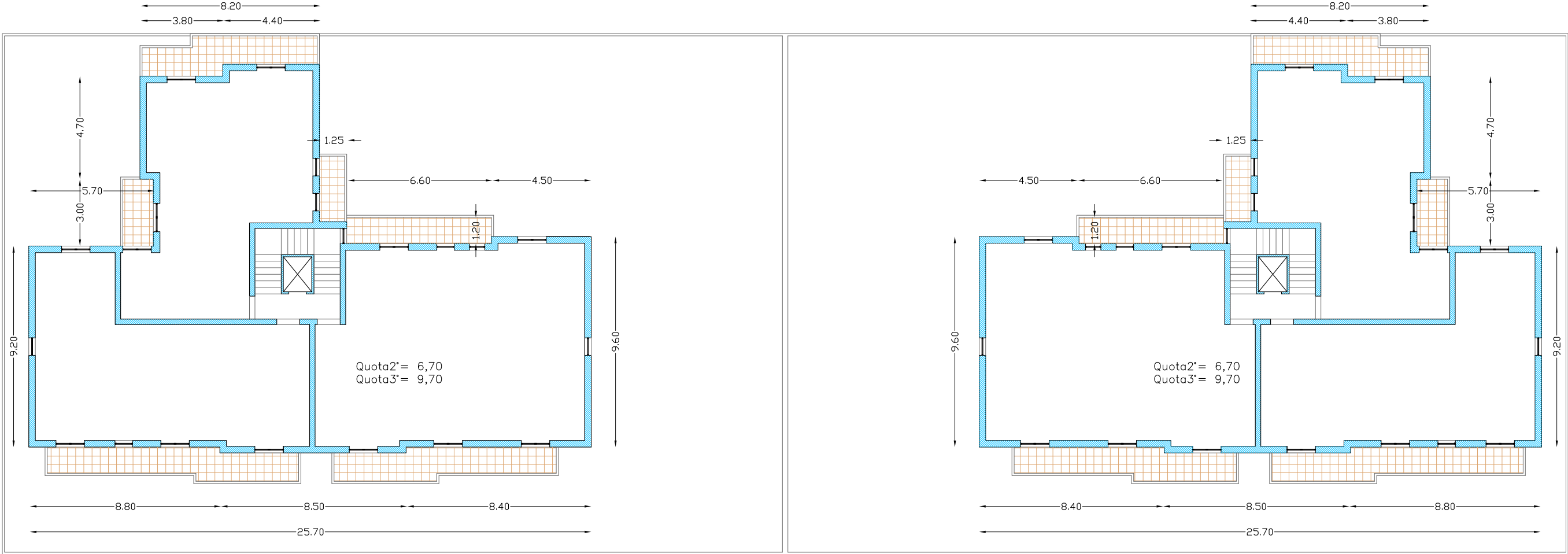
scala 1:200

EDIFICIO :
20 - 21



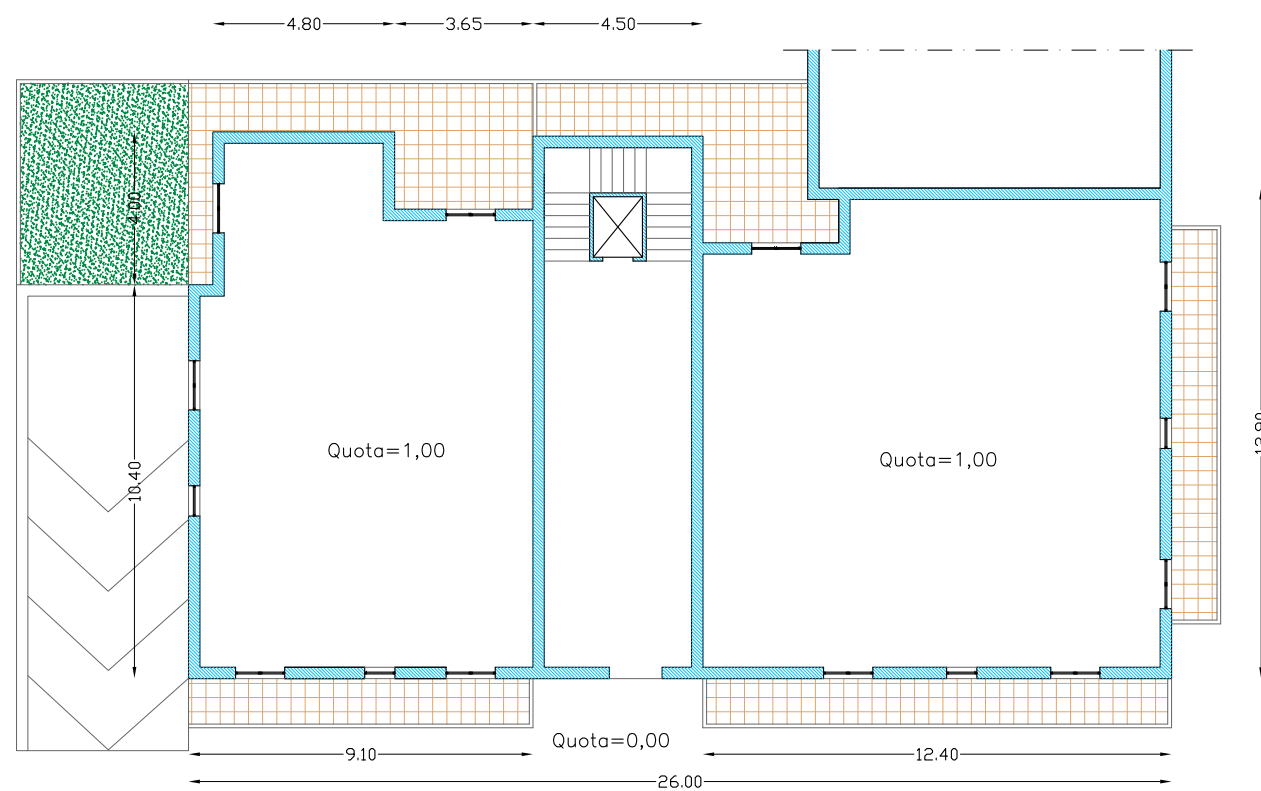
PIANTA PIANO PRIMO

EDIFICIO :
20 - 21

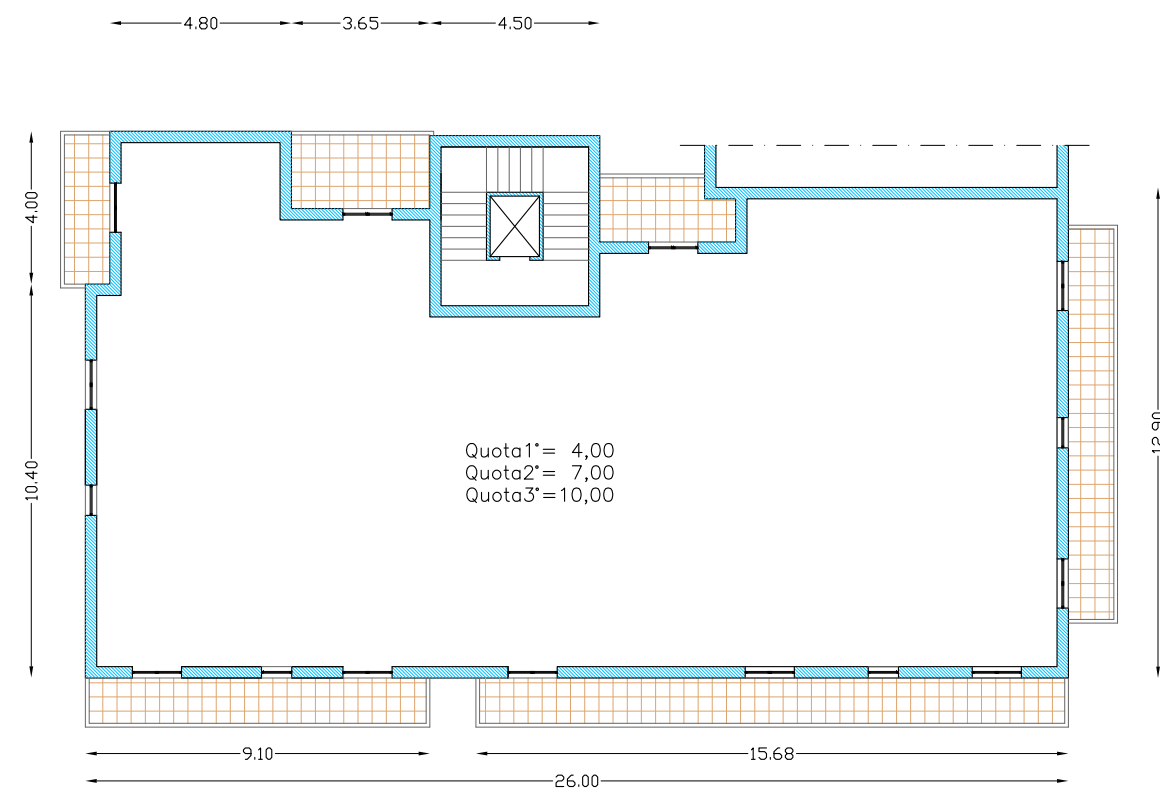


PIANTA PIANO TIPO

EDIFICIO: 7



PIANTA PIANO TERRA



PIANTA PIANO TIPO