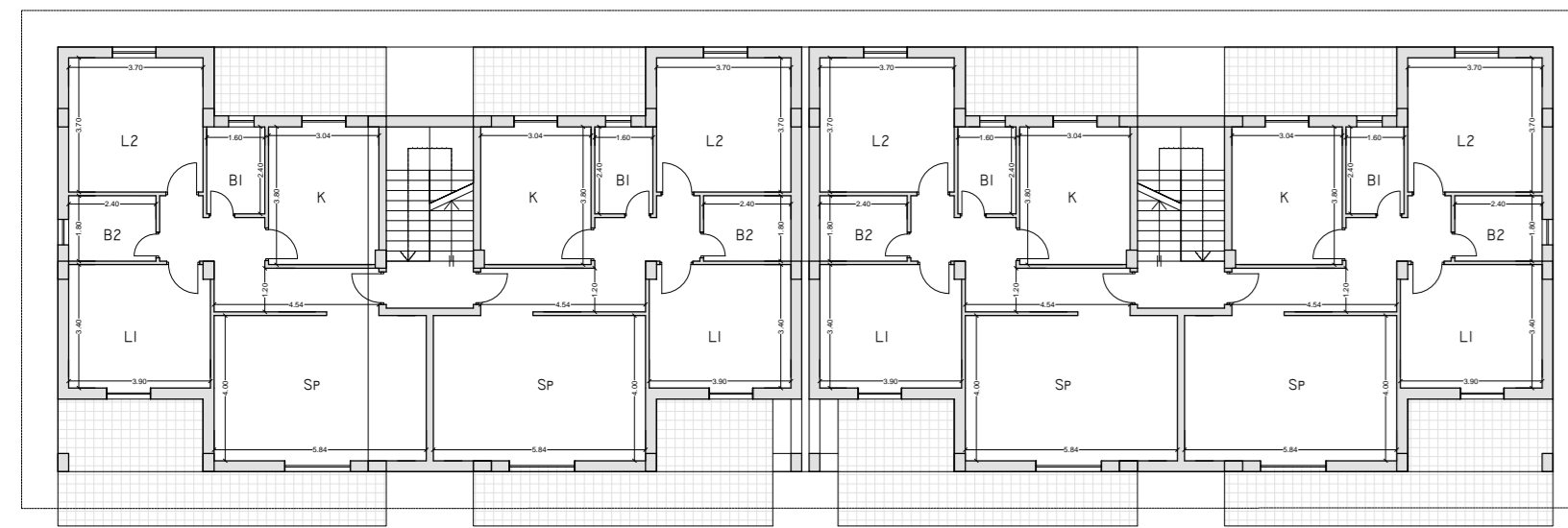
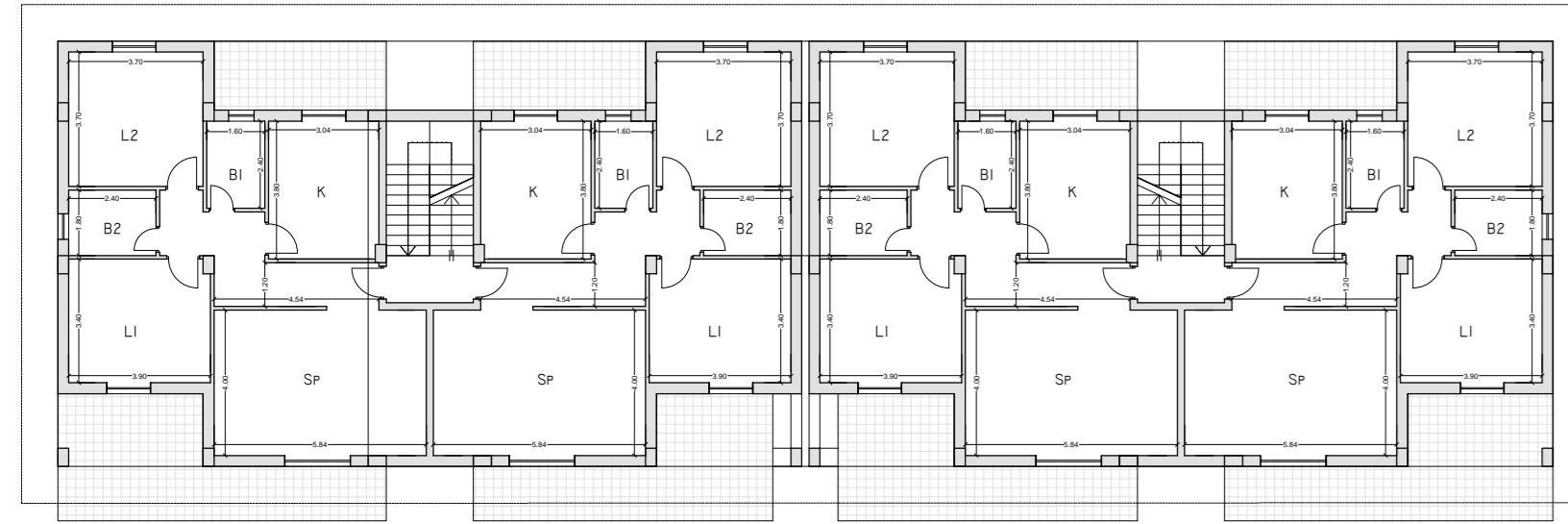


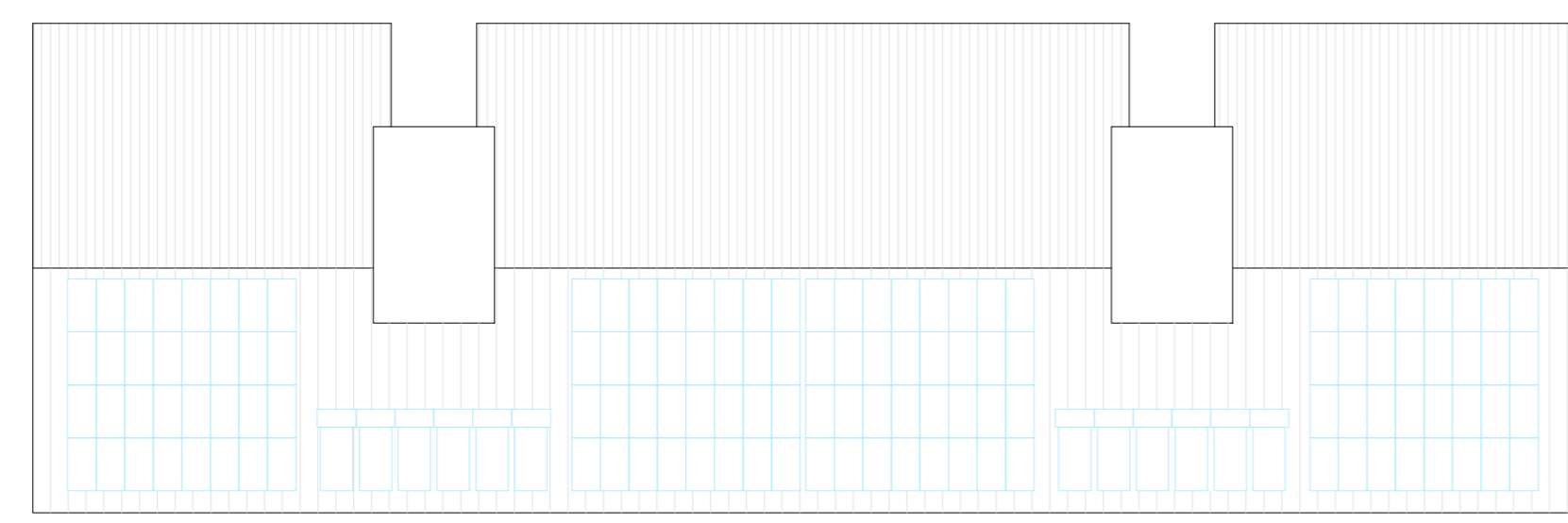
PIANTA PIANO SECONDO - EDIFICIO TIPO



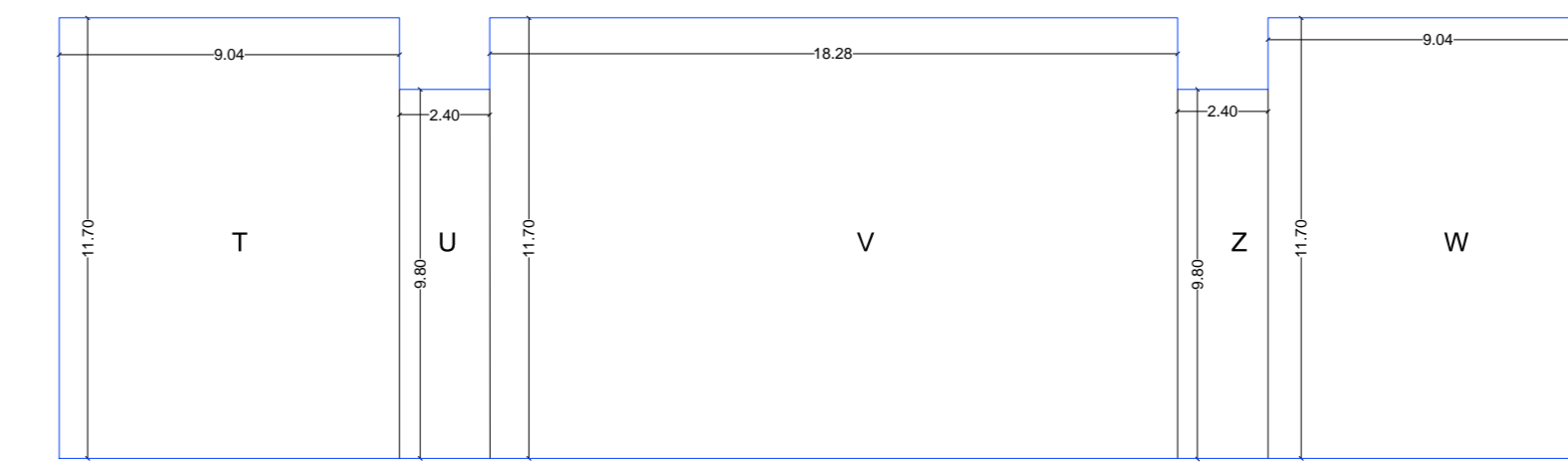
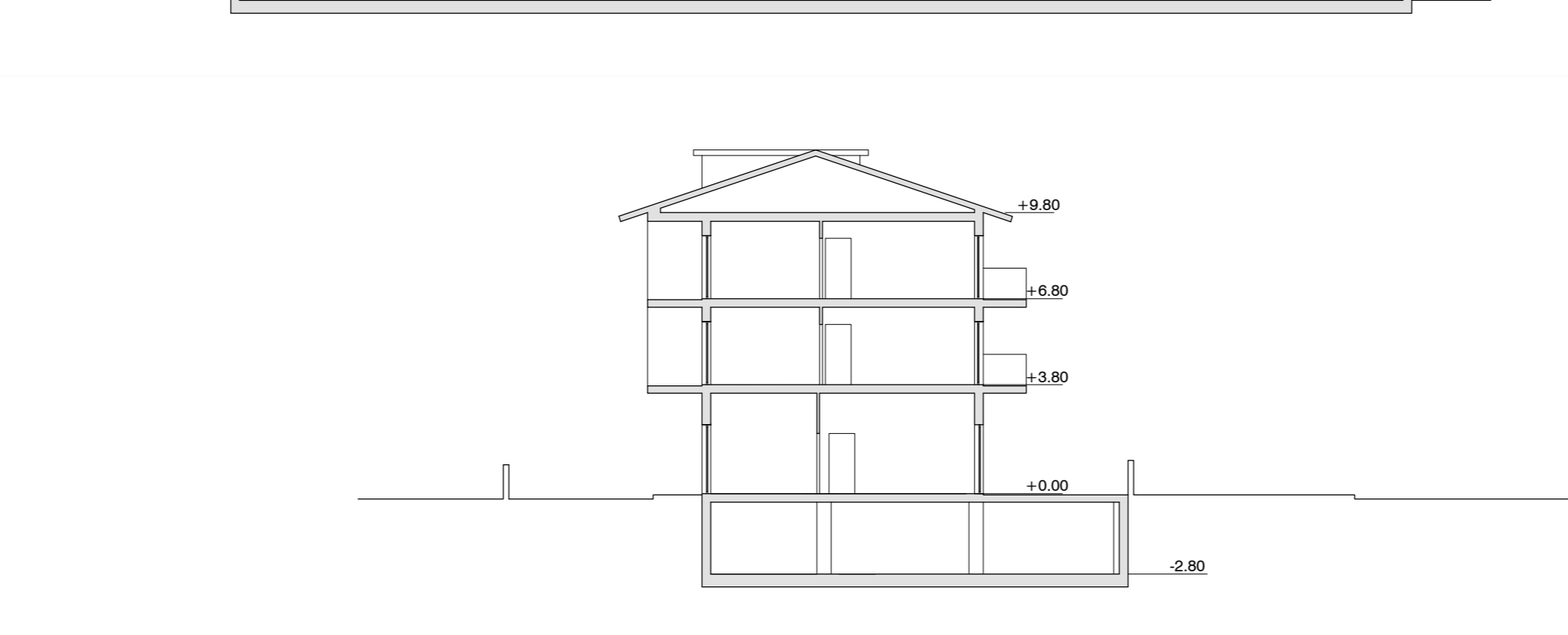
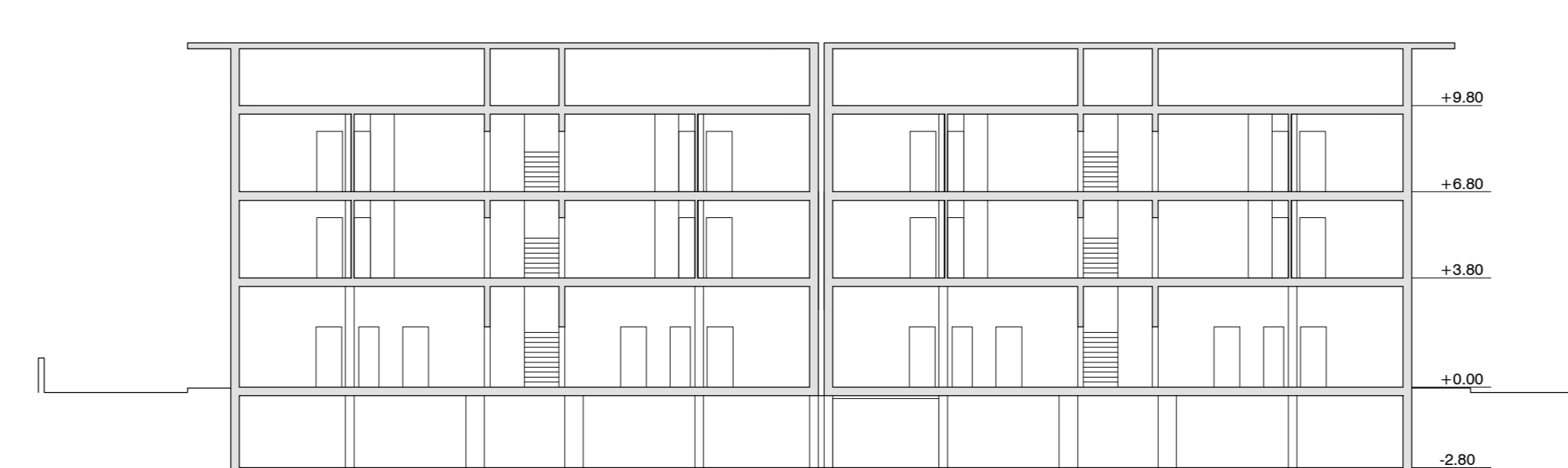
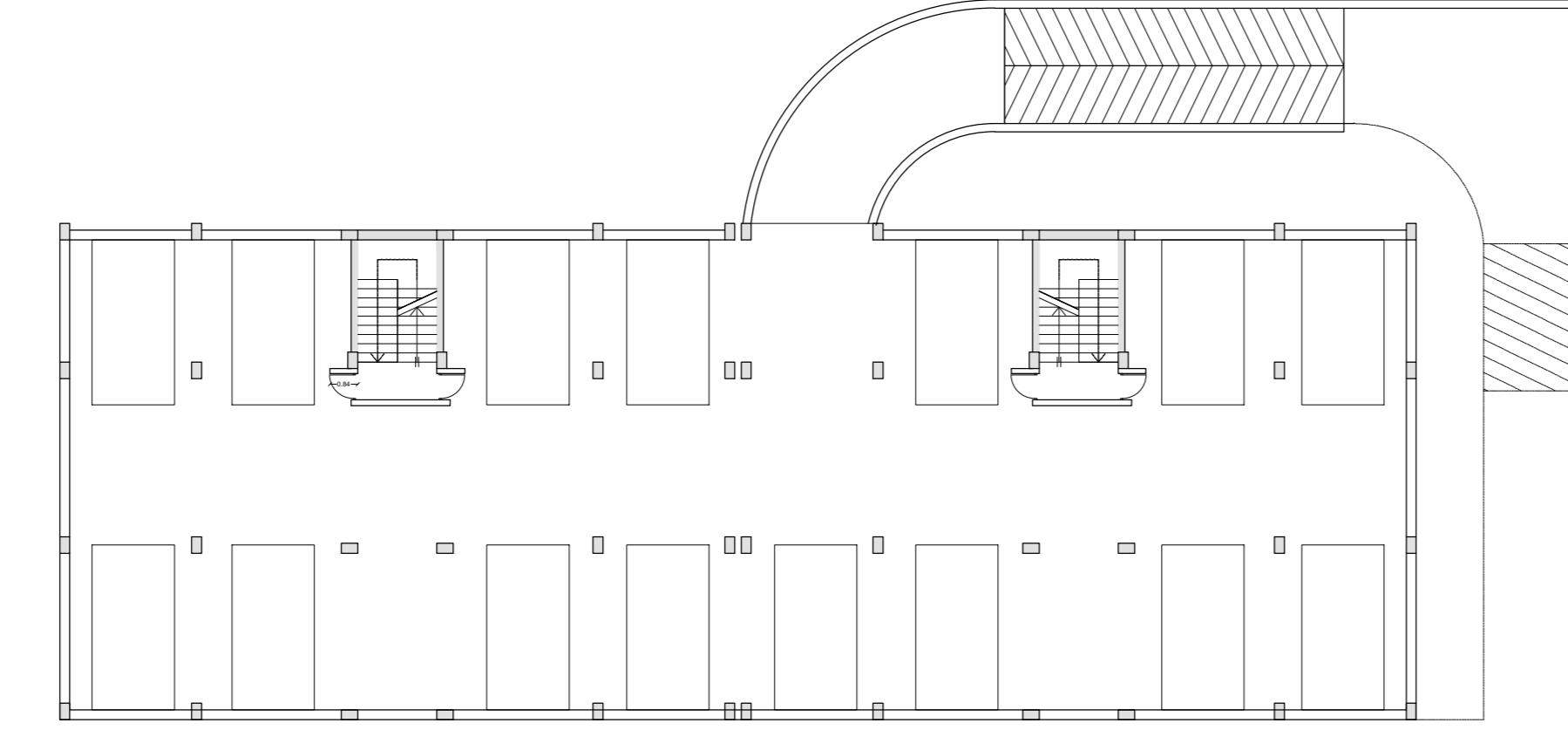
PIANTA PIANO PRIMO - EDIFICIO TIPO



PIANTA COPERTURA - EDIFICIO TIPO

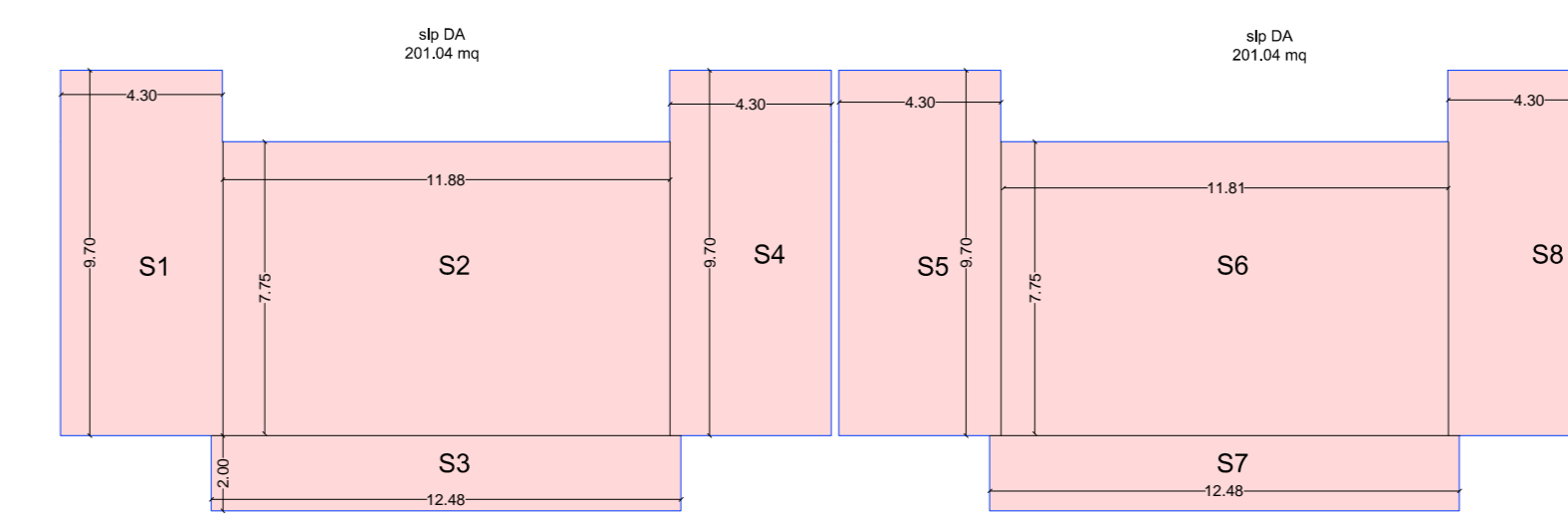


PIANTA PIANO INTERRATO - EDIFICIO TIPO

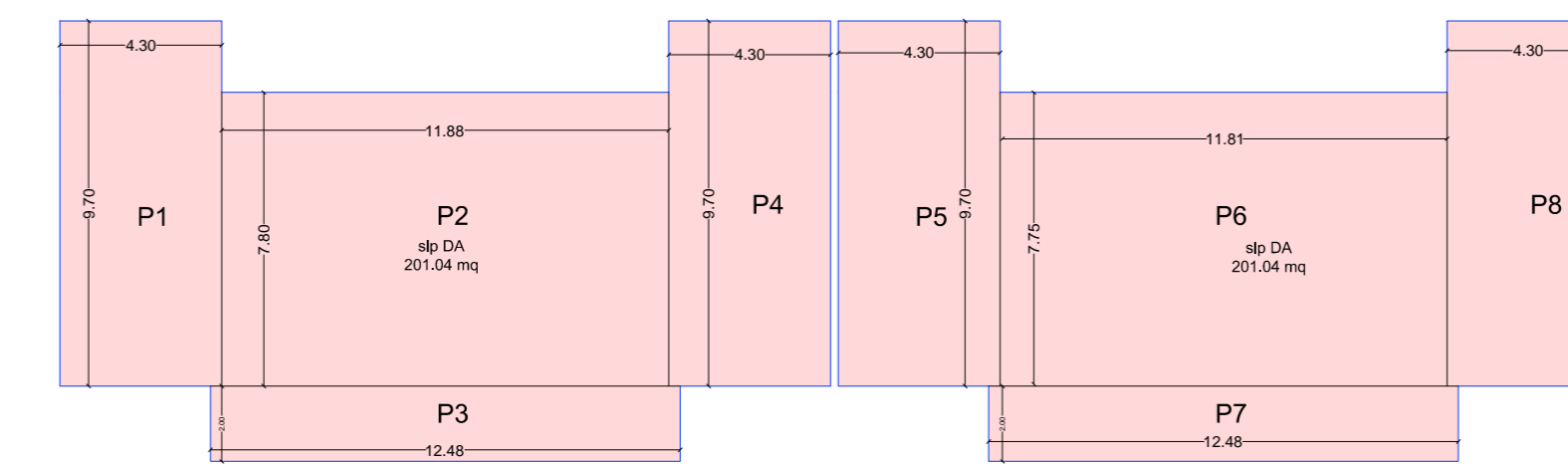


SCHEMA SUPERFICIE COPERTA - EDIFICIO TIPO
Superficie Coperta Edificio tipo = T+U+Z+W = 11.70 x 9.04 + 2.40 x 9.80 + 11.70 x 18.28 + 2.40 x 9.80 + 11.70 x 9.04 = 105.76+23.52+213.87+23.52+105.76 = 472.43 mq = 473 mq

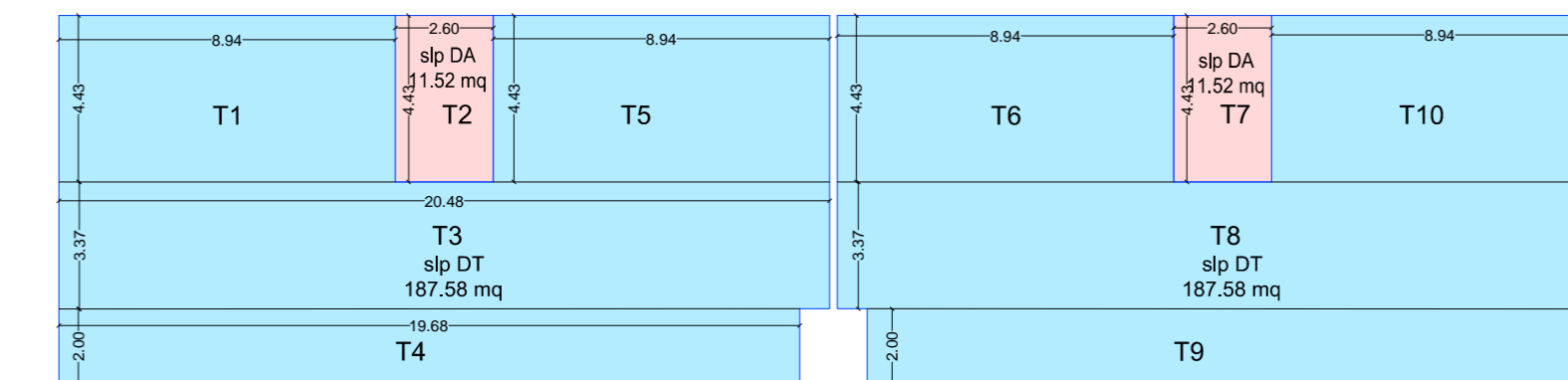
RIEPILOGO - EDIFICIO TIPO
Volume DA Edificio = 87.55+1206.24+1206.24 = 2500.03 mc
Volume totale DA e DT = 2500.03+1425.61 = 3925.64 mc
Parcheggi pertinenziali P3 = V Da/10 = V DT/10 = 2500.03/10 + 1425.61/10 = 250 + 142.56 = 392.56mq



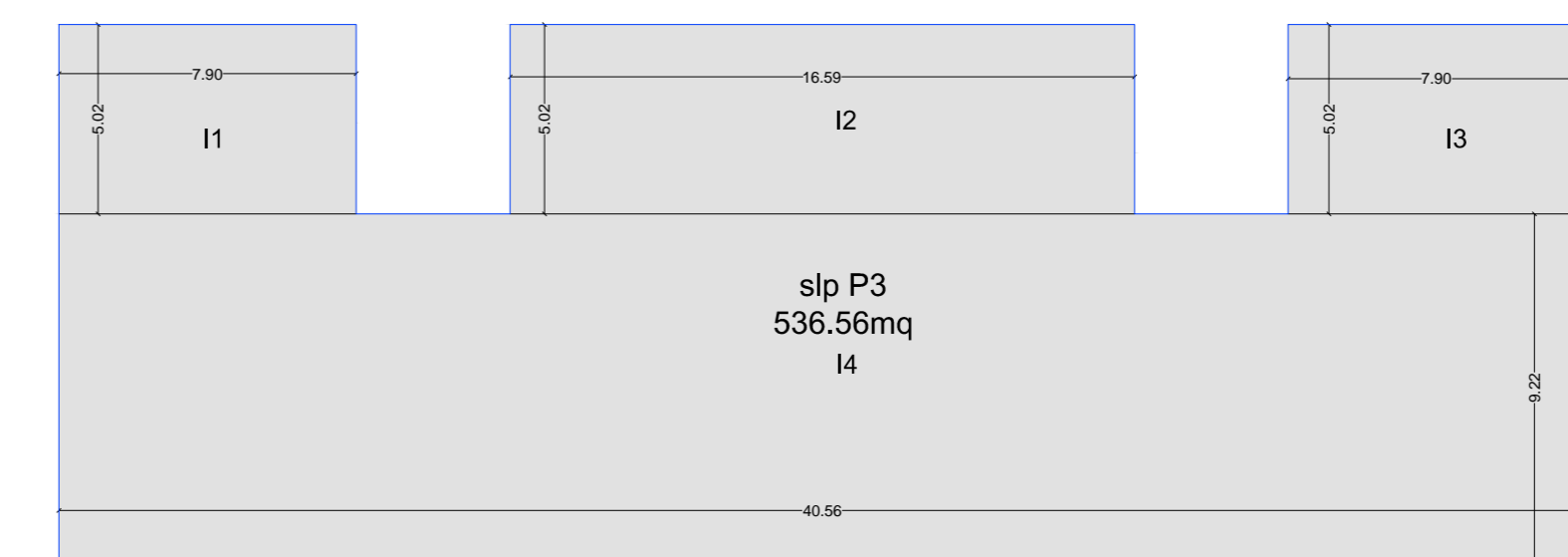
SCHEMA PIANO SECONDO - EDIFICIO TIPO
Volume DA P2 = S1xH = (S1+S2+S3+S4+S5+S6+S7+S8) x H = (4.30x9.70+11.88x7.80+2.00x12.48+9.70x4.30+4.30x9.70+11.88x7.80+1.00x12.48+9.70x4.30) x 3.00 = (41.71+92.66+24.96+41.71+41.71+92.66+24.96+41.71) x 3.00 = 1206.24 mc



SCHEMA PIANO PRIMO - EDIFICIO TIPO
Volume DA P1 = S1xH = (P1+P2+P3+P4+P5+P6+P7+P8) x H = (4.30x9.70+11.88x7.80+2.00x12.48+9.70x4.30+4.30x9.70+11.88x7.80+1.00x12.48+9.70x4.30) x 3.00 = (41.71+92.66+24.96+41.71+41.71+92.66+24.96+41.71) x 3.00 = 1206.24 mc



SCHEMA PIANO TERRA - EDIFICIO TIPO
Volume DA PT = S1xH = (T2+T7) x H = (2.60x4.43+2.60x4.43) x 3.80 = (11.52+11.52) x 3.80 = 87.55 mc
Volume DT PT = S1xH = (T1+T3+T4+T5+T6+T8+T9+T10) x H = (4.43x8.94+3.37x20.48+2.00x19.68+4.43x8.94+4.43x8.94+3.37x20.48+2.00x19.68+4.43x8.94) x 3.10 = (39.60+69.02+39.36+39.60+39.60+69.02+39.36+39.60) x 3.80 = 1425.61 mc



SCHEMA PIANO INTERRATO - EDIFICIO TIPO
slp P3 = I1+I2+I3 = 4.43x7.90+5.02x16.59+5.02x7.90+5.02x16.59+5.02x7.90+5.02x16.59+5.02x7.90+5.02x16.59+5.02x7.90 = 536.56mq

- RESIDENZIALE DA
- TERZIARIO/COMMERCIALE DT
- PARCHEGGIO PERTINENZIALE P3

COMUNE DI MONTECORVINO PUGLIANO
PROVINCIA DI SALERNO

RICHIESTA DI APPROVAZIONE DI PIANO URBANISTICO ATTUATIVO
DEL SUBCOMPARTO ARU n.3A ai sensi dell'art. 81 del RUEC



I Tecnici: STUDIO SAIPROGETTI ING. CHRISTOPHER GIUSEPPE IMMEDIATO ING. GIOVANNI CAPORASO	I Richiedenti: AREA COSTRUZIONI S.R.L. PRIMAVERA S.R.L. IMMOBILIARE GENERALE VENETA S.R.L.
STUDIO TECNICO ING. ANIELLO SAGGESE	

ELABORATO:	SCALA	1:200	TAVOLA
SUB COMPARTO ARU n.3A_UNITA' MINIMA D'INTERVENTO 2	DATA		P6c
FABBRICATI C-D-E: tipologia edilizia e destinazioni d'uso	AGGIORNAMENTO		
	A		
	B		