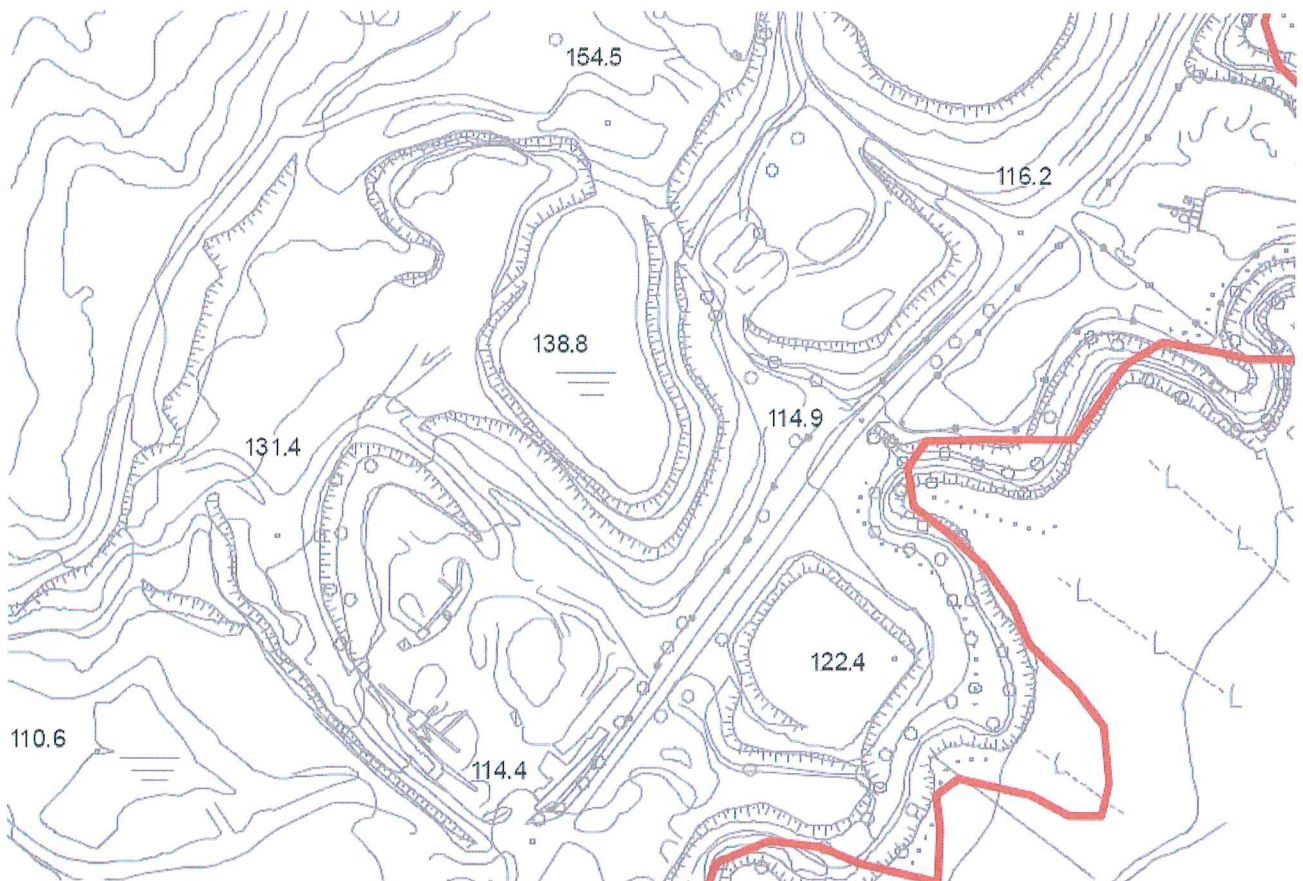


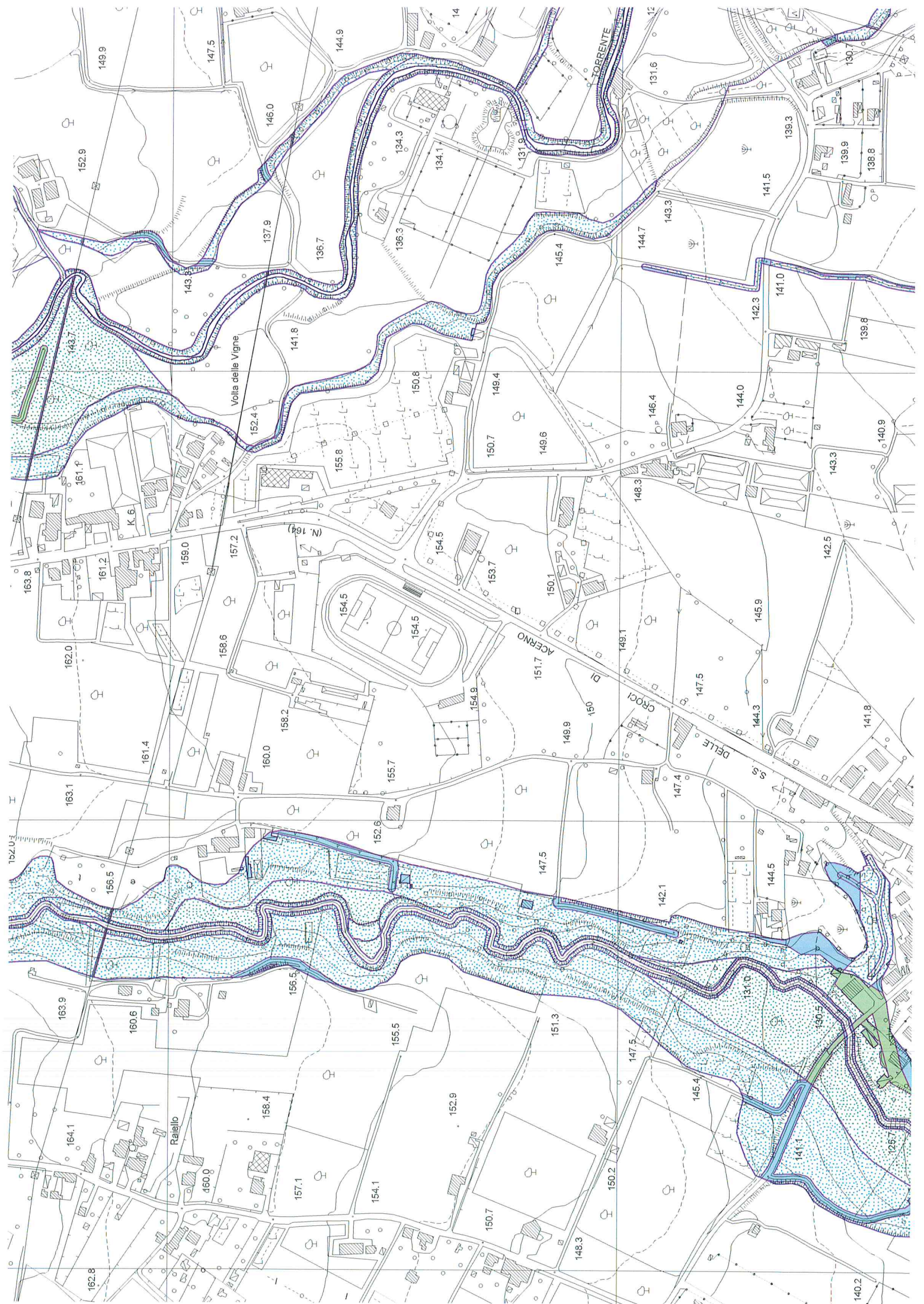
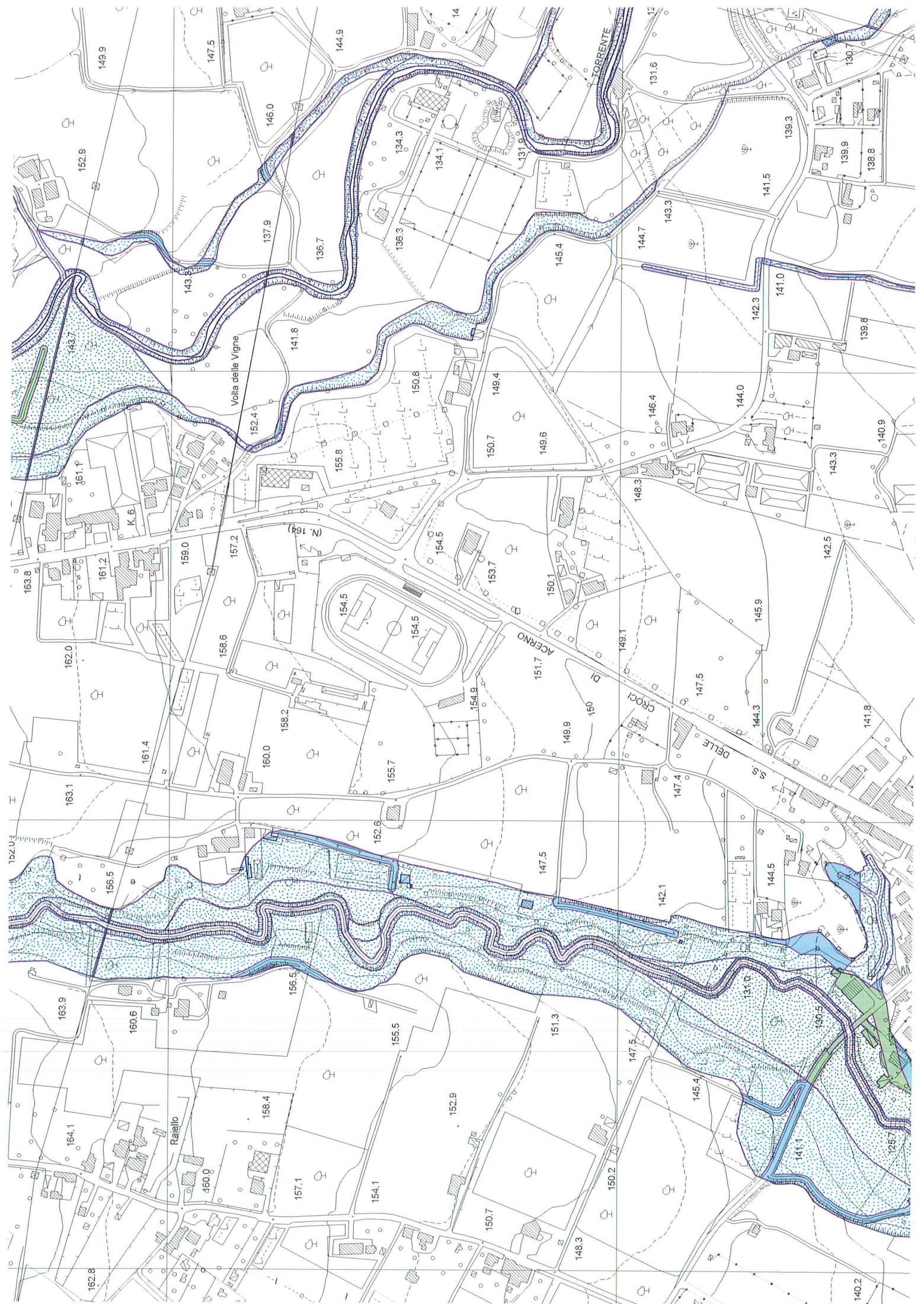
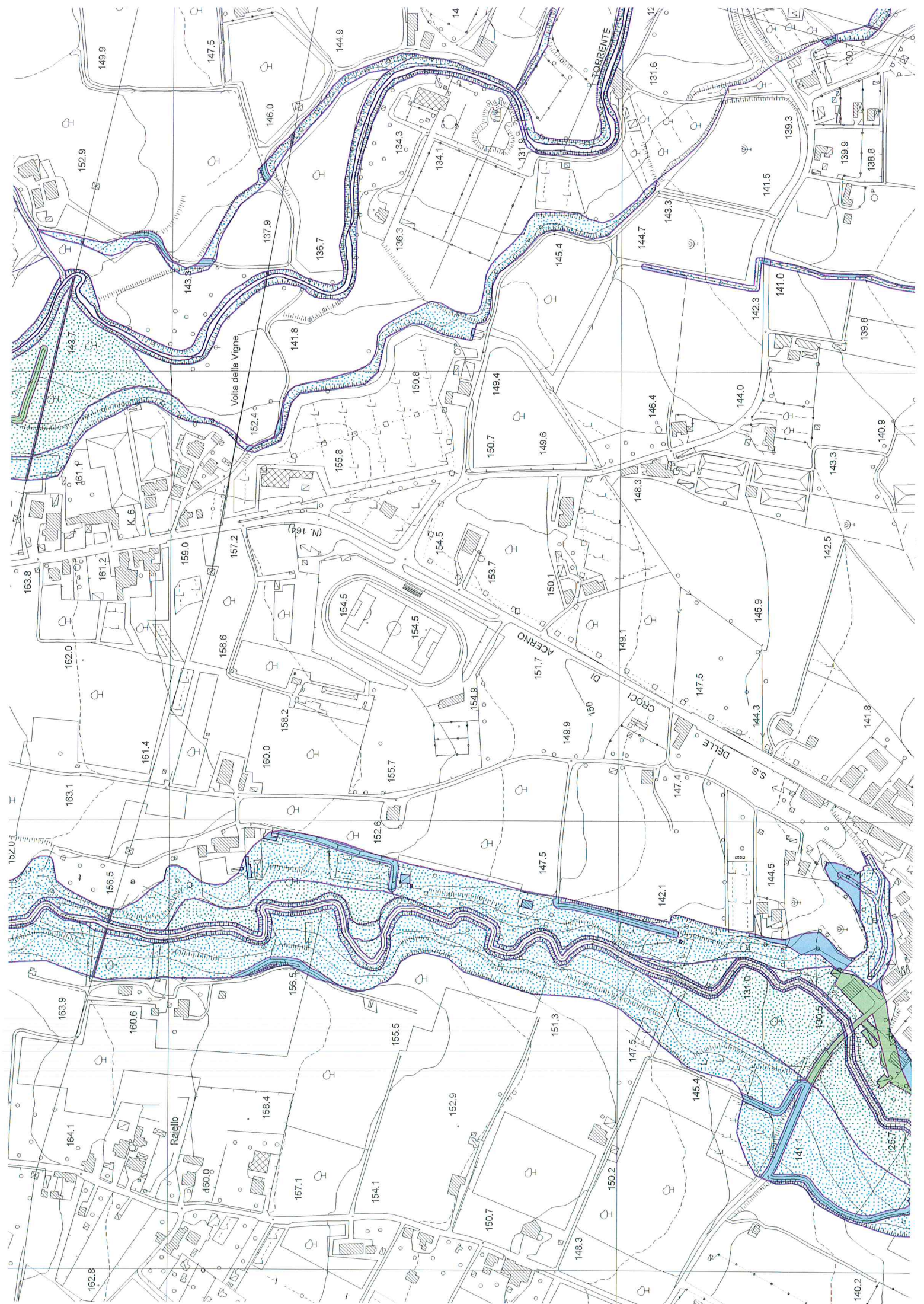
Elaborati Grafici

- ❖ *Aerofotogrammetria*
 - ❖ *Carta rischio frana*
 - ❖ *IGM e ortofoto*
 - ❖ *Aree SIC e ZPS*
 - ❖ *Tavola stato dei luoghi curve di livello*
 - ❖ *Tavola stato dei luoghi scarpate*
 - ❖ *Tavola stato finale ripristino ambientale curve di livello*
 - ❖ *Tavola stato finale ripristino ambientale scarpate*
-
-
-
-

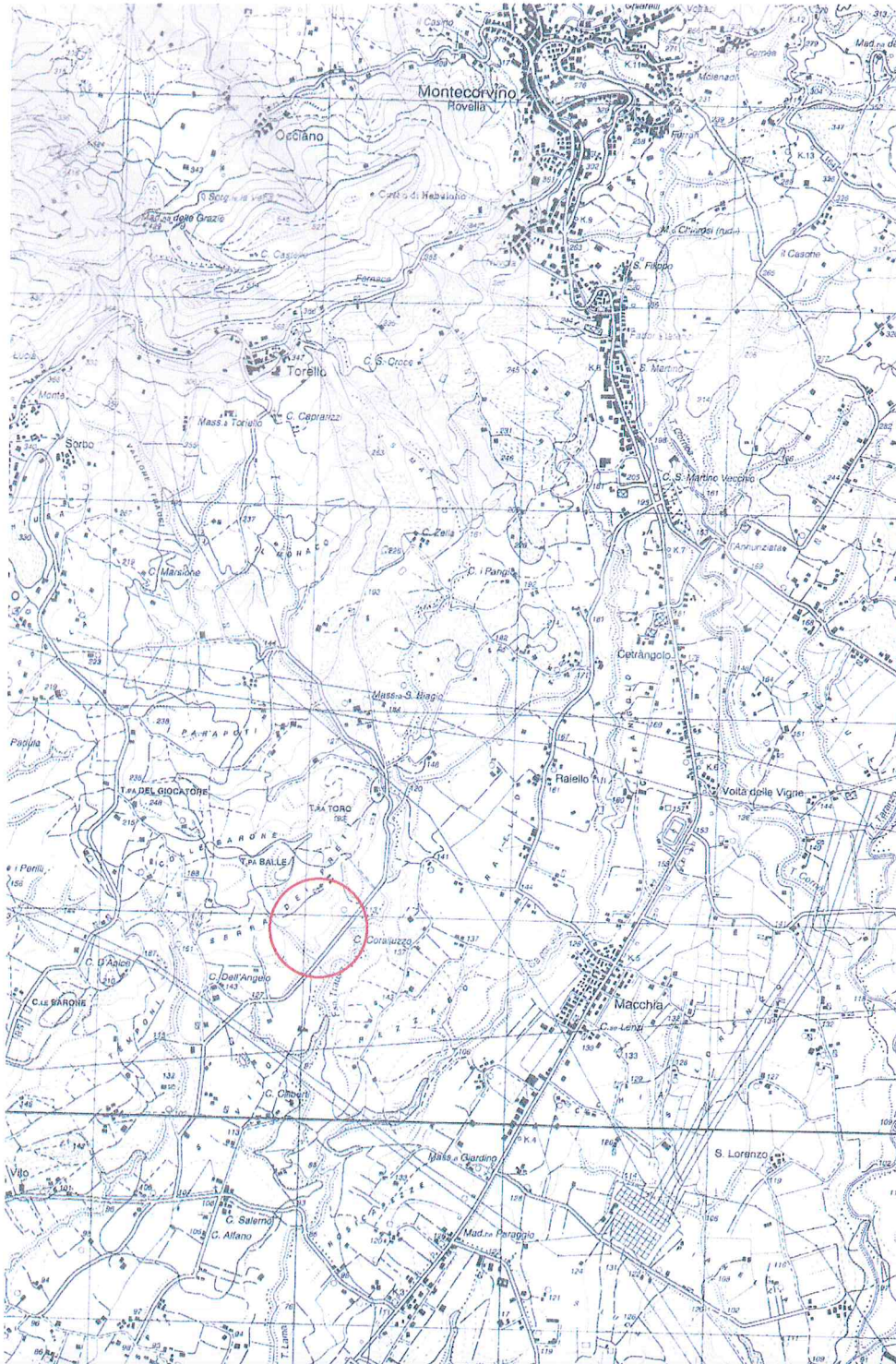
COMUNE DI MONTECORVINO PUGLIANO (SA)
Stralcio Aerofotogrammetrico

Scala 1:5000



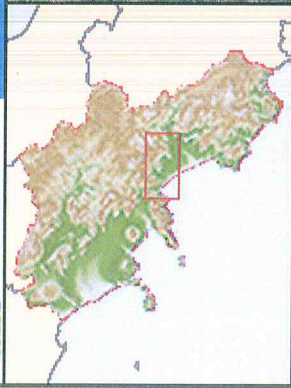


Stralcio IGM scala 1:25000



Ortofoto area d'intervento stato di fatto





Scala 1 : 150000



Arete protette e vincoli

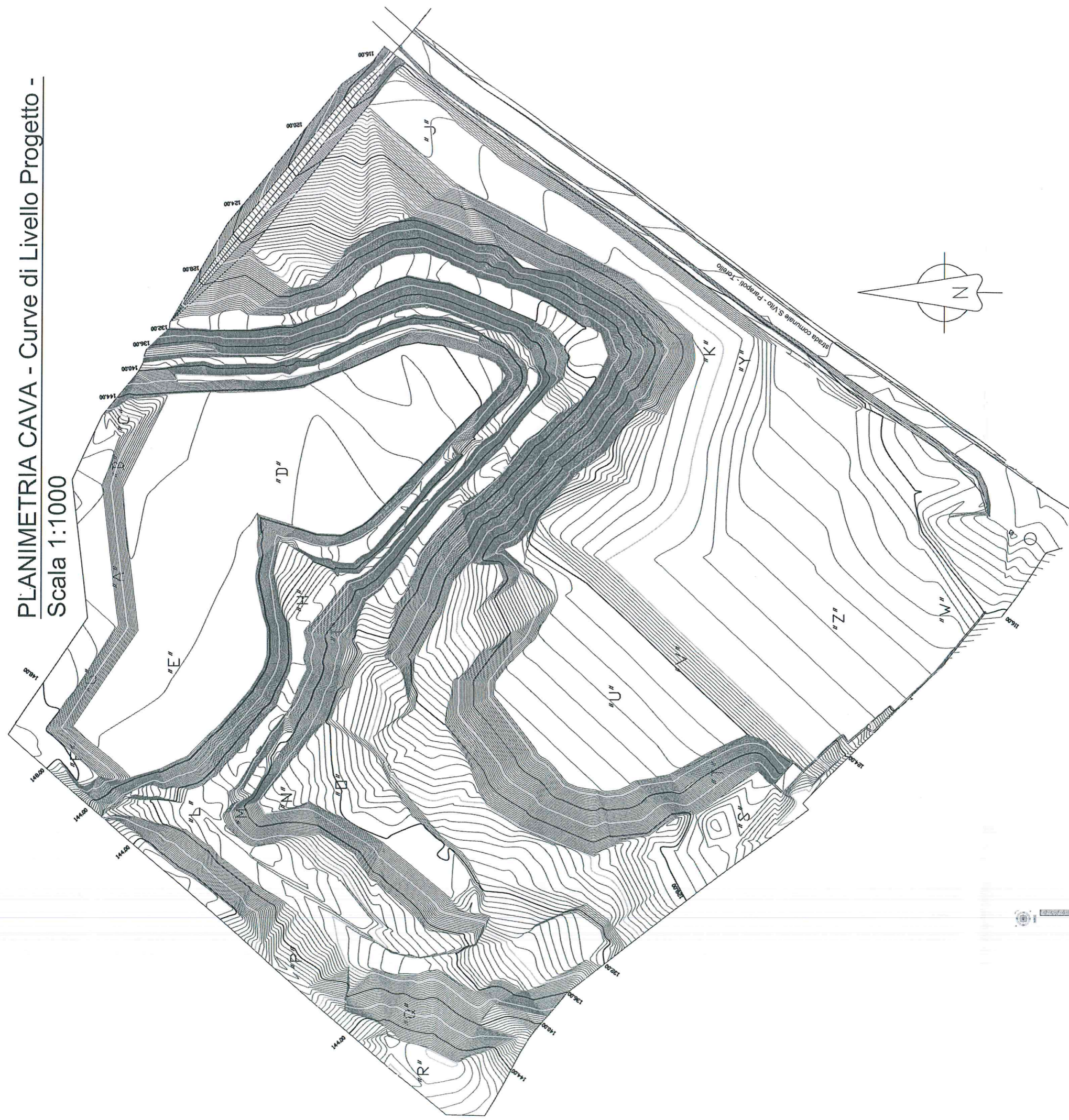
 SIC

 ZPS

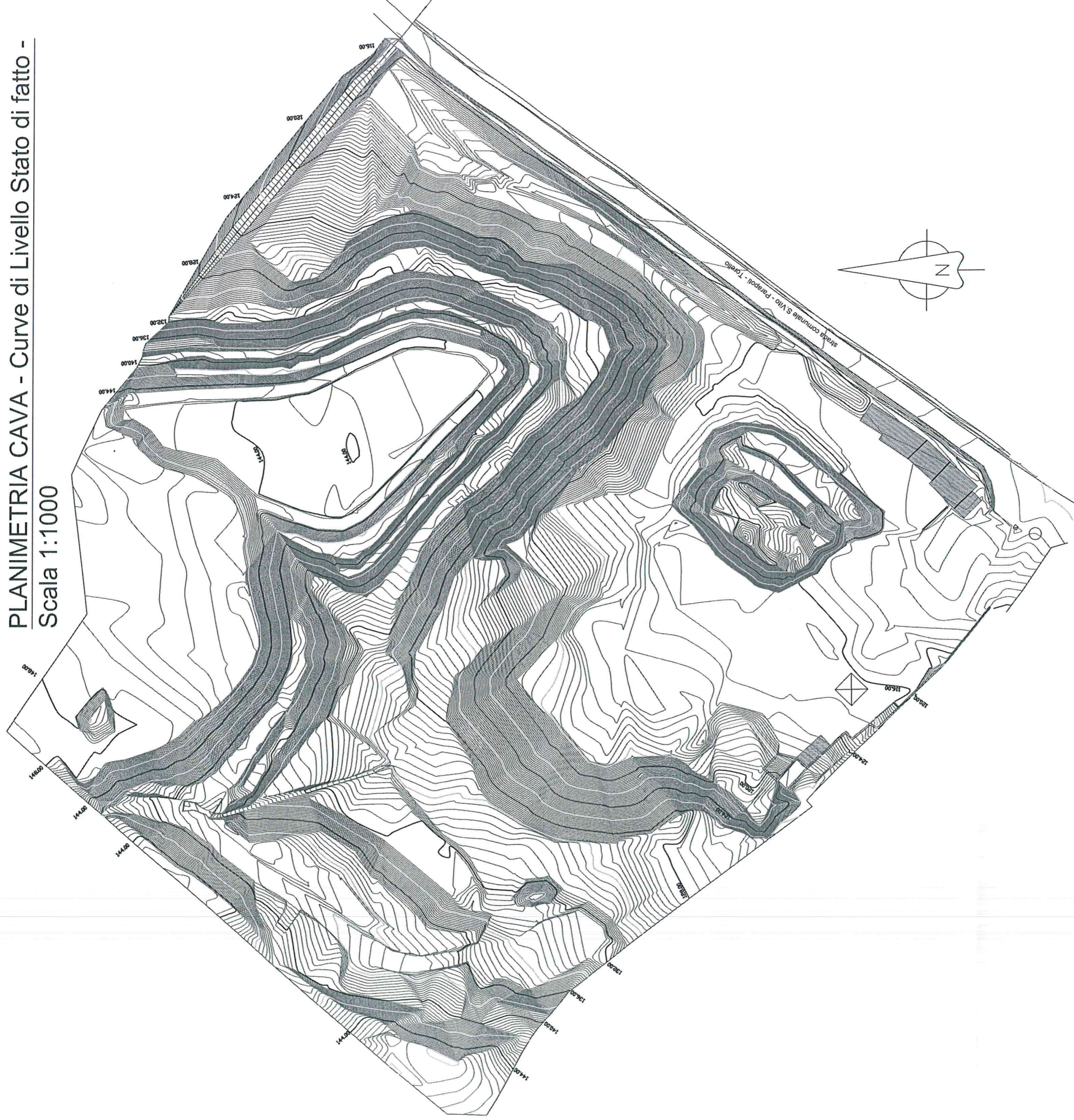
Rilievo

Ortofoto

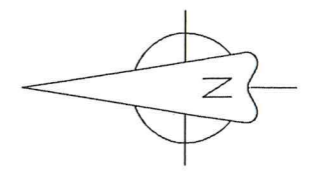
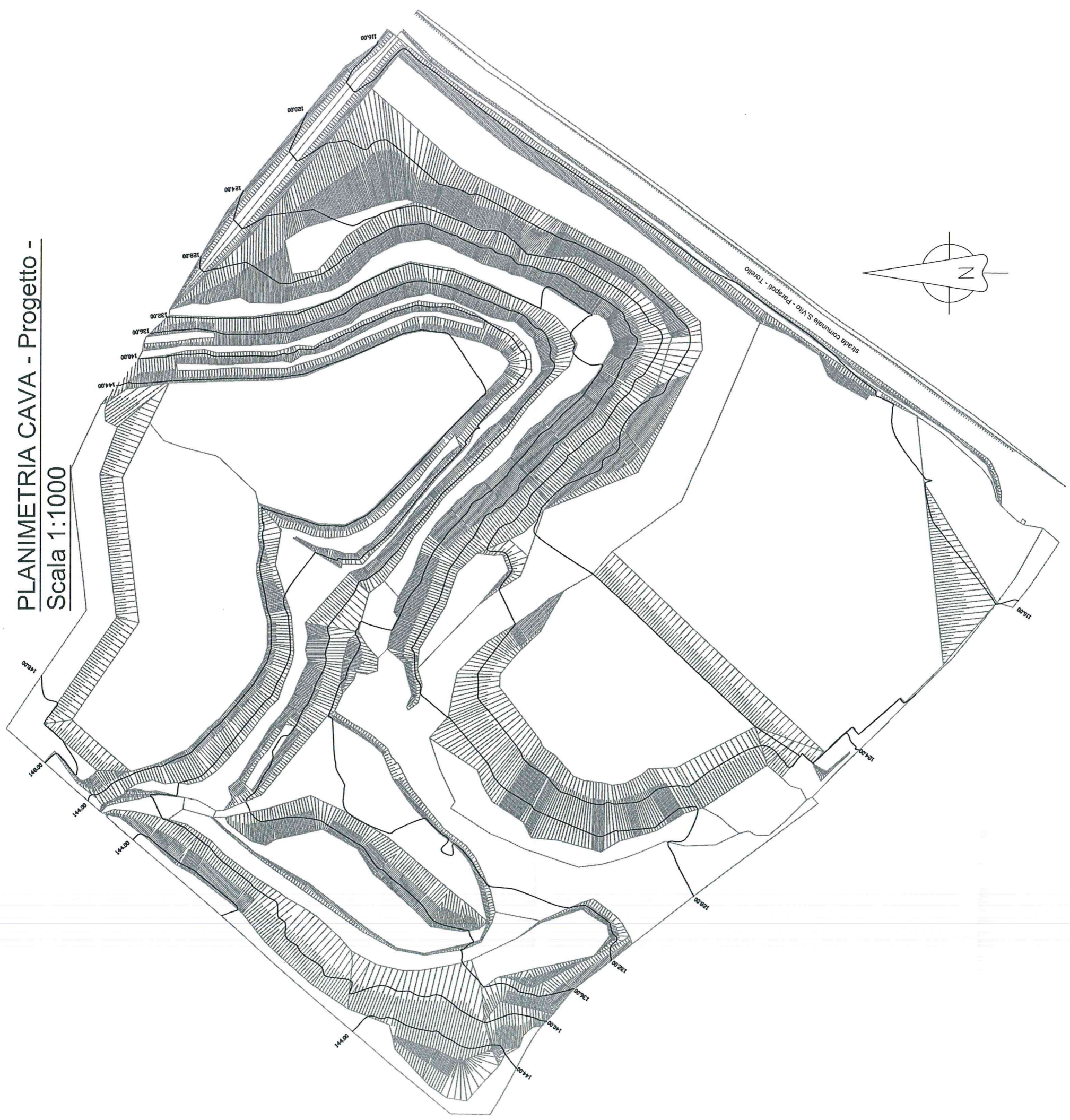
PLANIMETRIA CAVA - Curve di Livello Progetto -
Scala 1:1000



PLANIMETRIA CAVA - Curve di Livello Stato di fatto -
Scala 1:1000



PLANIMETRIA CAVA - Progetto -
Scala 1:1000



strada comunale S. Vito - Pappol - Tollo

148.00

148.00

148.00

148.00

148.00

148.00

148.00

148.00

148.00

148.00

148.00

148.00

144.00

144.00

144.00

144.00

144.00

144.00

144.00

144.00

144.00

144.00

144.00

144.00

144.00

144.00

144.00

144.00

144.00

144.00

144.00

144.00

144.00

144.00

144.00

144.00

144.00

144.00

144.00

144.00

144.00

144.00

144.00

144.00

144.00

144.00

144.00

144.00

144.00

144.00

144.00

144.00

144.00

144.00

144.00

144.00

144.00

144.00

144.00

144.00

144.00

144.00

144.00

144.00

144.00

144.00

144.00

144.00

144.00

144.00

144.00

144.00

144.00

144.00

144.00

144.00

144.00

PLANIMETRIA CAVA - Stato di fatto -
Scala 1:1000

