

# COMUNE MONTECORVINO PUGLIANO

Provincia SALERNO



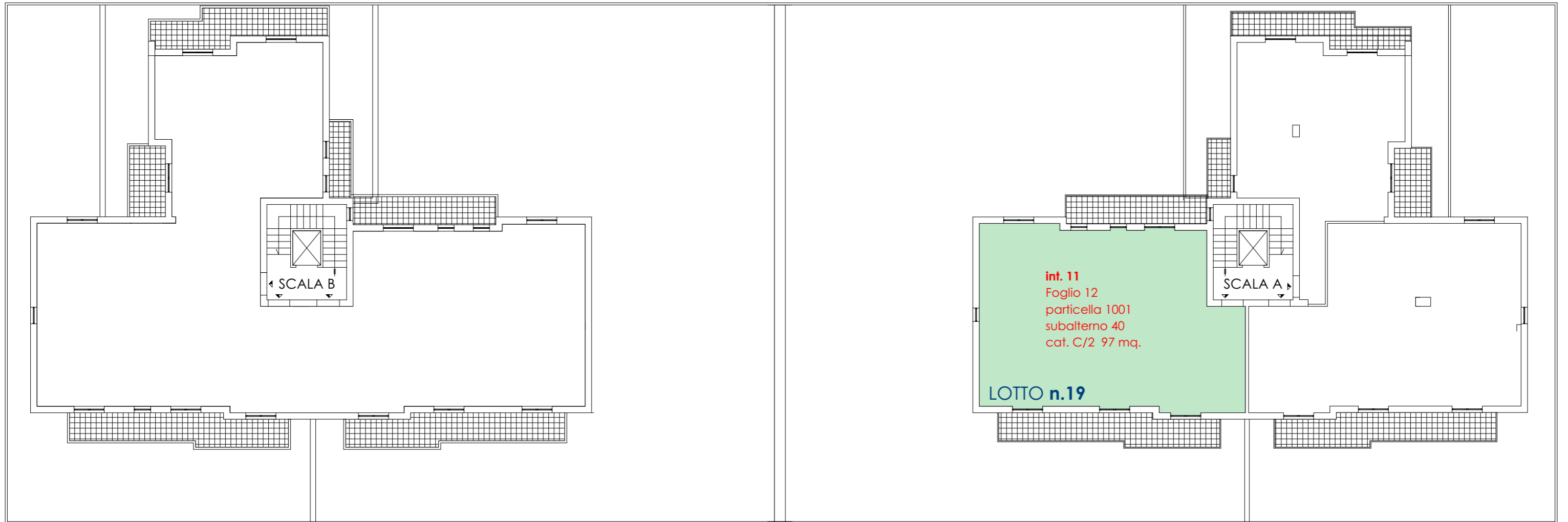
## Planimetria generale insediamento P.co VERDIANA



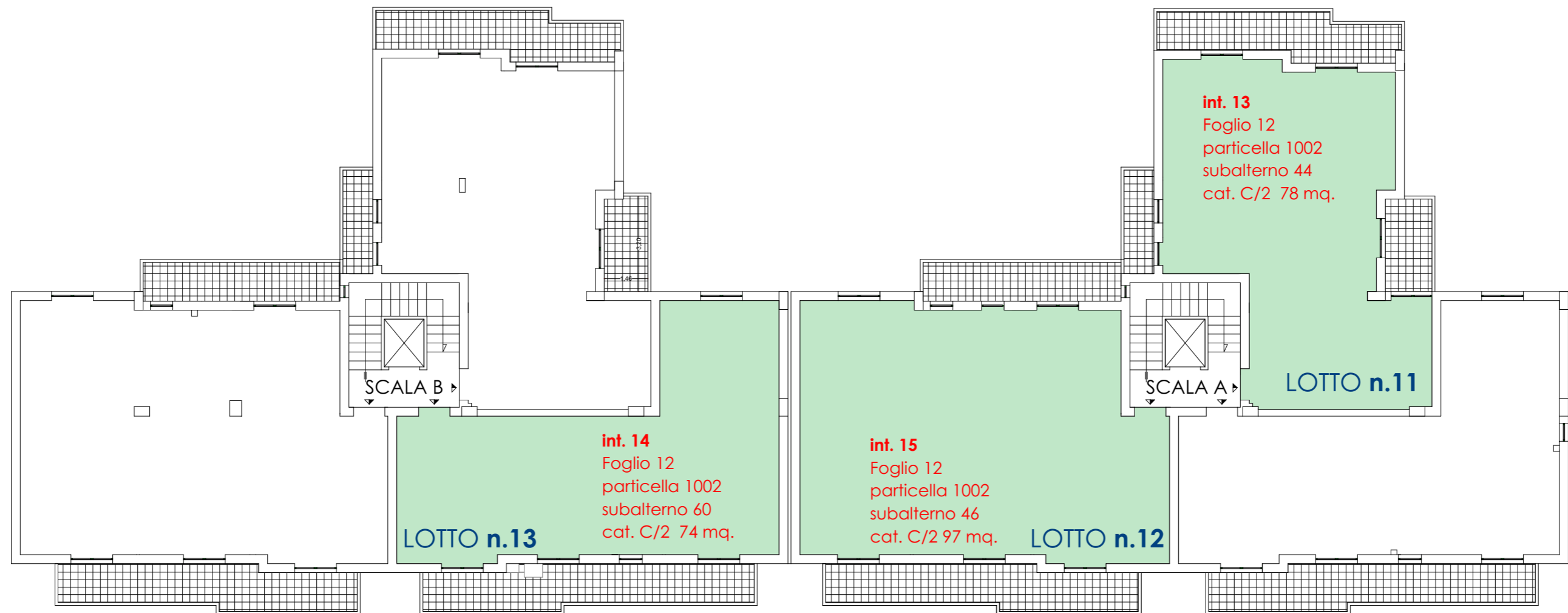
ELABORATO " D " grafico di individuazione dei **LOTTI**



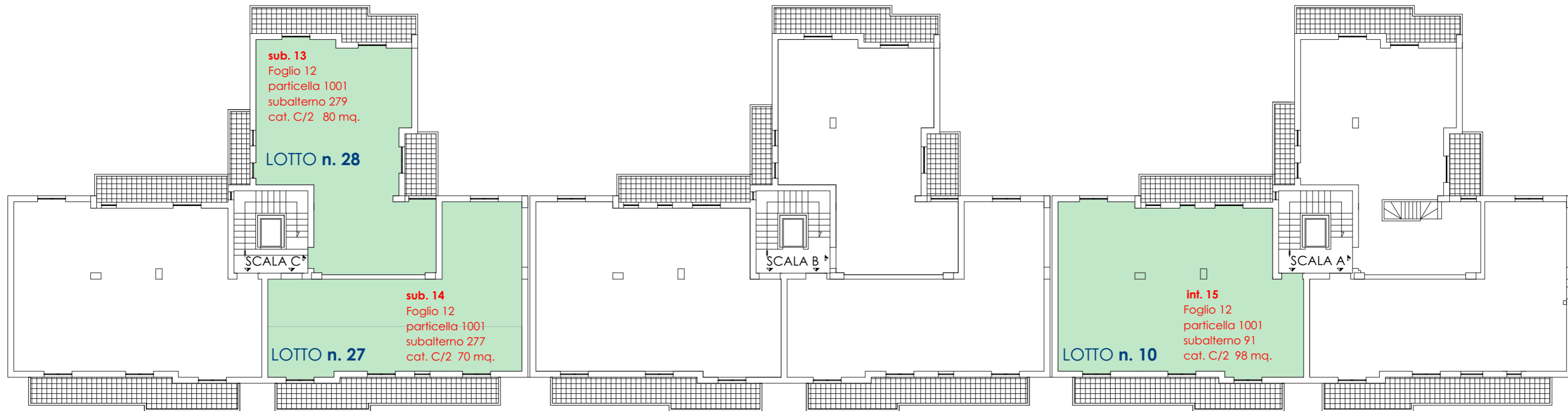
PIANO SOTTOTETTO palazzina "A"



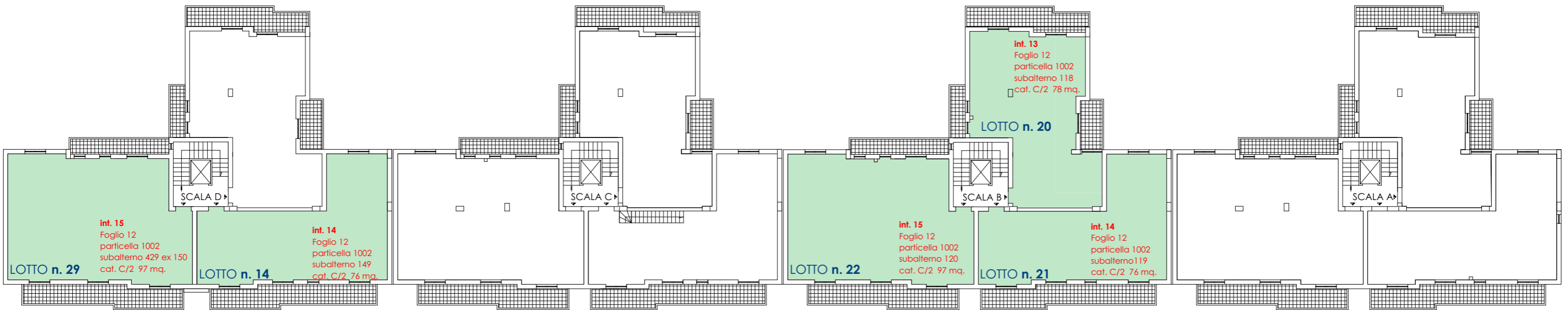
## PIANO SOTTOTETTO palazzina "A2"



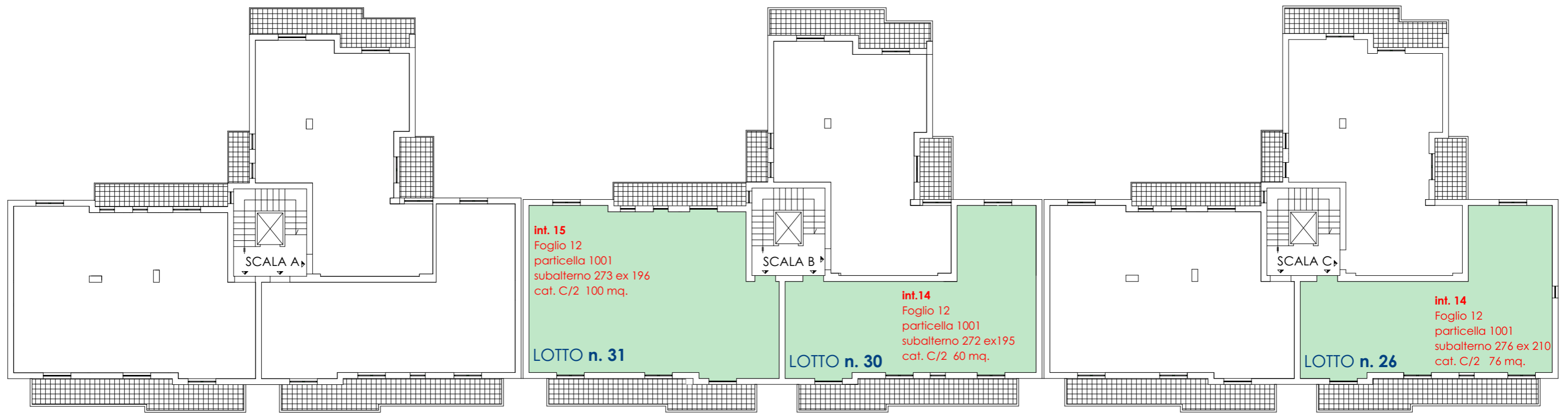
PIANO SOTTOTETTO palazzina "B"



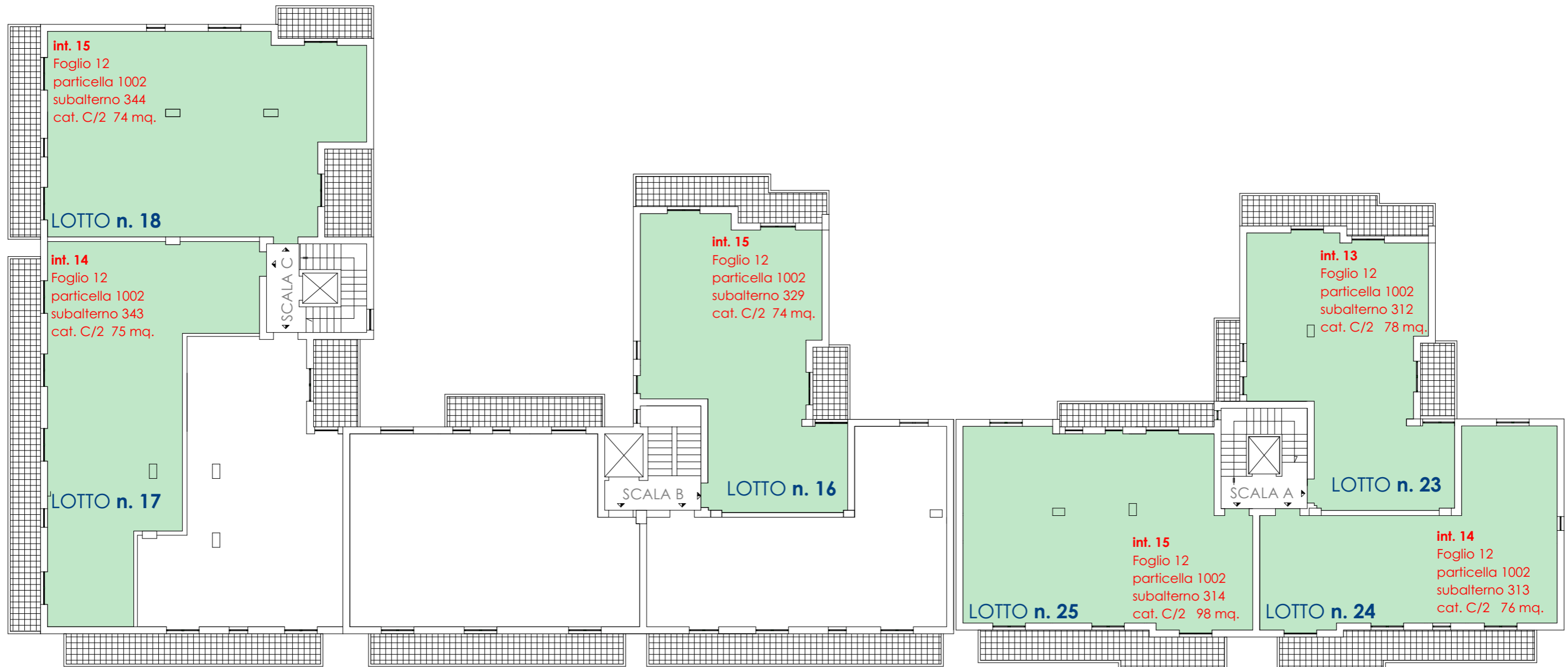
PIANO SOTTOTETTO palazzina "B2"



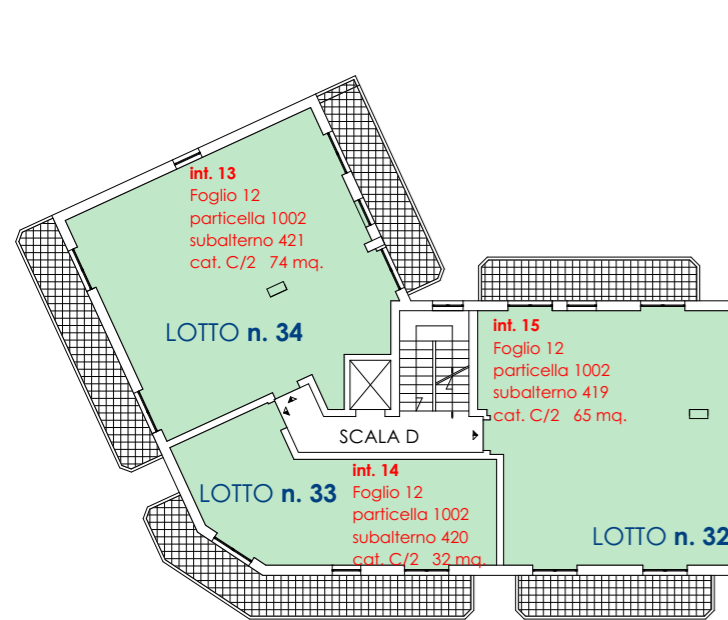
PIANO SOTTOTETTO palazzina "C"



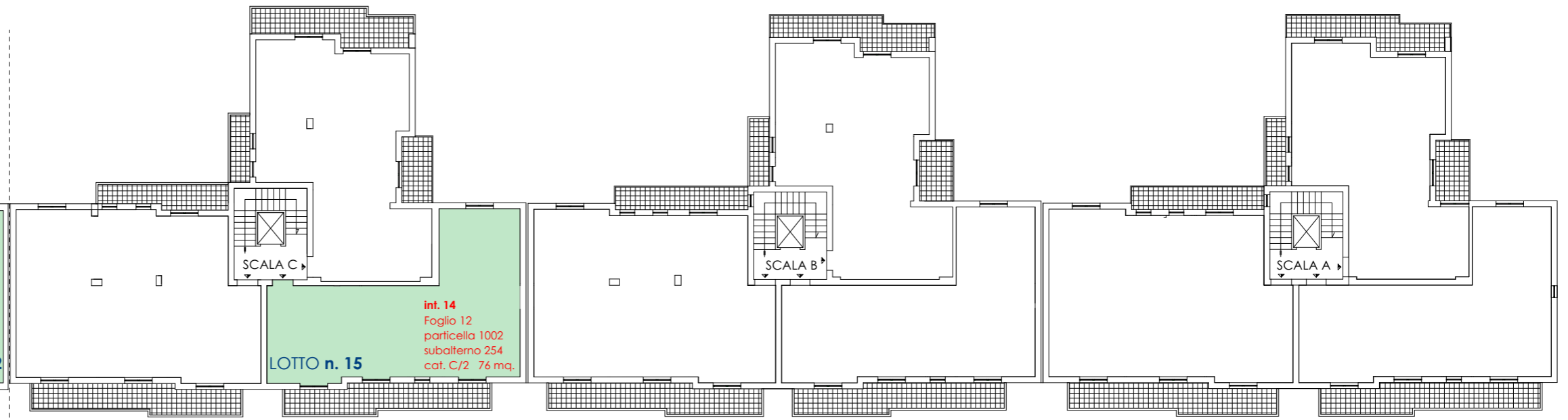
## PIANO SOTTOTETTO palazzina "D"



PIANO SOTTOTETTO palazzina "Z"

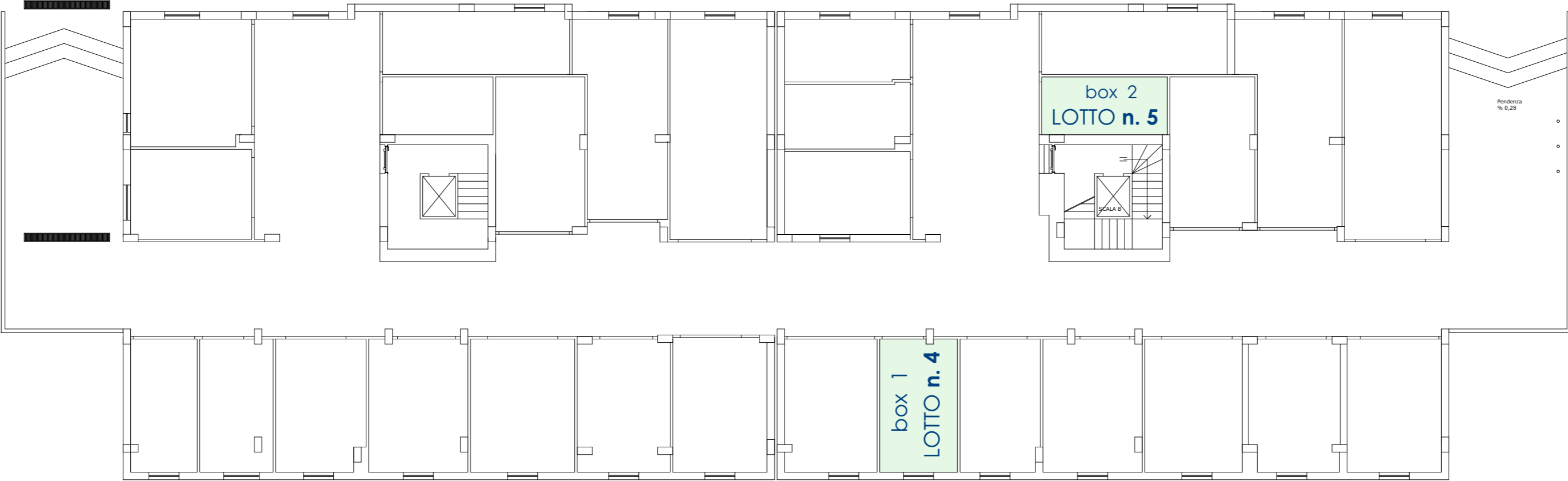


PIANO SOTTOTETTO palazzina "C2"





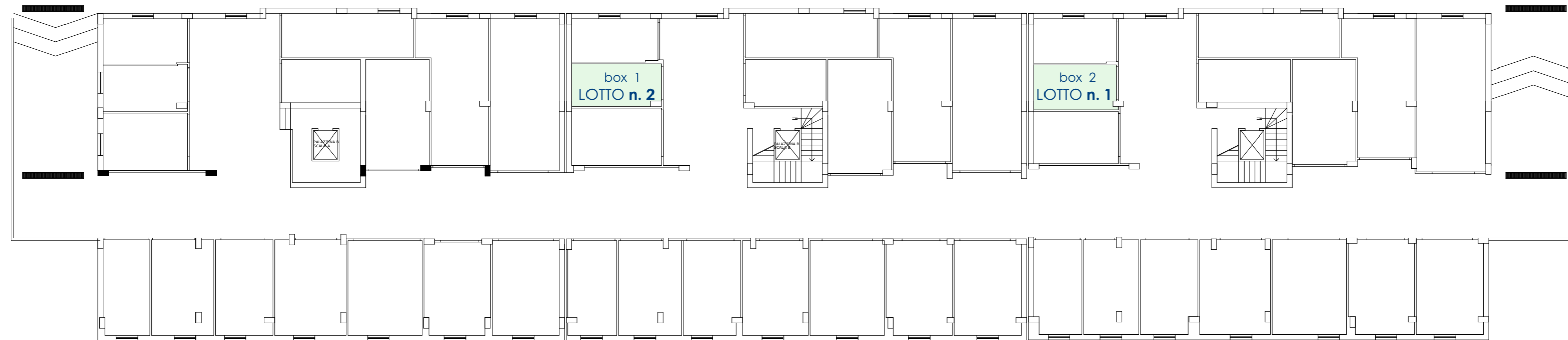
# PALAZZINA A2



box 1 Foglio 12  
particella 1002  
subalterno 70  
cat. C/6 16 mq.

box 2 Foglio 12  
particella 1002  
subalterno 79  
cat. C/6 11 mq.

## PALAZZINA B

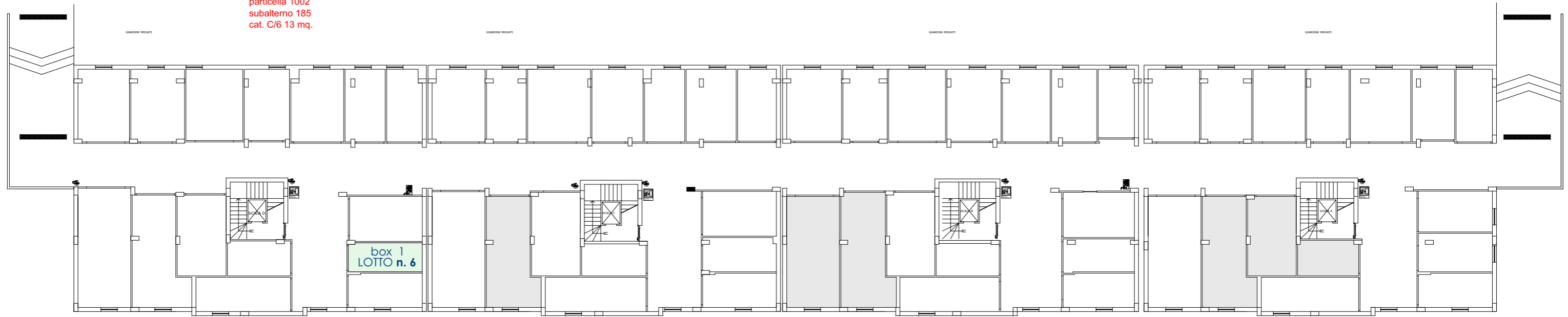


box 1 Foglio 12  
particella 1001  
subalterno 157  
cat. C/6 12 mq.

box 2 Foglio 12  
particella 1001  
subalterno 149  
cat. C/6 12 mq.

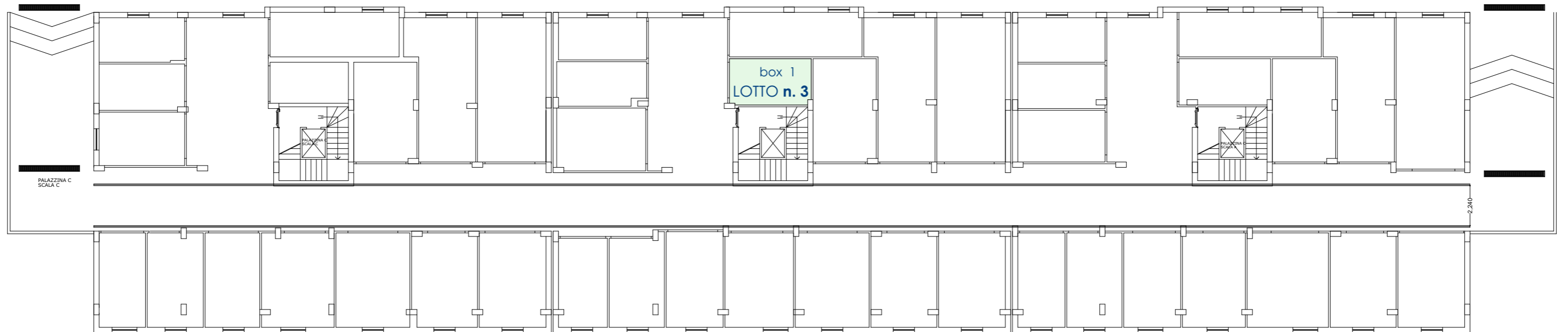
**PALAZZINA B2**

box 1 Foglio 12  
particella 1002  
subalterno 185  
cat. C/6 13 mq.



# PALAZZINA C

box 1 Foglio 12  
particella 1001  
subalterno 223  
cat. C/6 12mq.



**PALAZZINA Z-C2**

box 1 Foglio 12  
particella 1002  
subalterno 278  
cat. C/6 22mq.

